


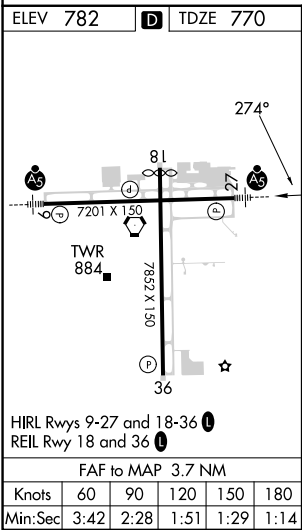
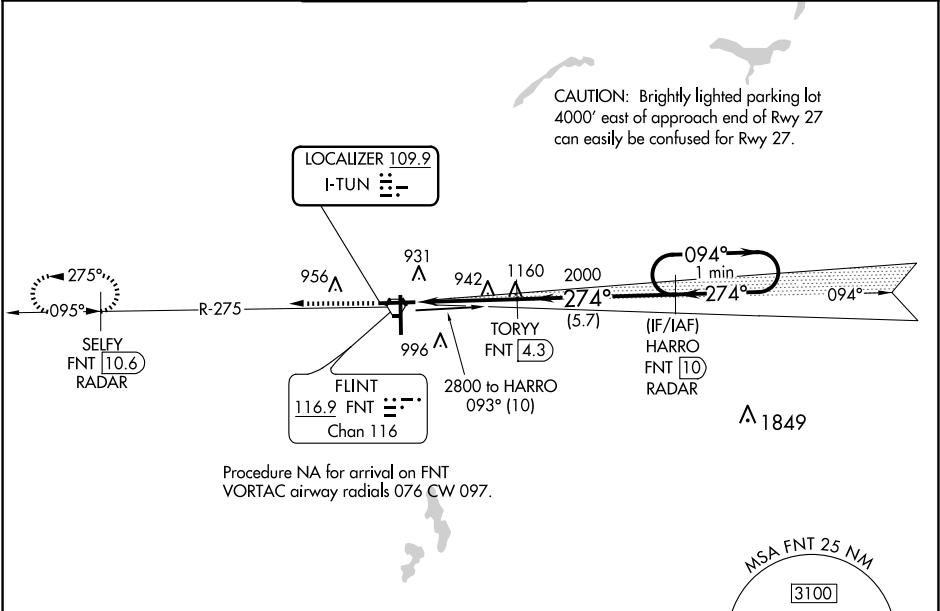


LOC I-TUN 109.9	APP CRS 274°	Rwy Idg TDZE Apt Elev 7201 770 782
---------------------------	------------------------	--

ILS or LOC RWY 27
BISHOP INTL (F'NT)

DME or RADAR required for procedure entry. DME or RADAR required.			MALSR 	MISSED APPROACH: Climb to 2600 on FNT VORTAC R-275 direct SELFY/FNT VORTAC 10.6 DME/RADAR and hold.	
	DME from FNT VORTAC. Simultaneous reception of I-TUN and FNT DME required. For inop ALS, increase S-LOC 27 Cat A/B visibility to 1 SM, and Cat C/D visibility to 1 3/8 SM.				
ATIS 133.15	GREAT LAKES APP CON ★ 118.8 257.9	FLINT TOWER ★ 126.3 (CTAF)  257.9	GND CON 121.9	CLNC DEL 121.75	UNICOM 122.95



ELEV 782 D TDZE 770		2600 FNT R-275		SELFY FNT 10.6 RADAR		HARRO FNT 10 RADAR		One Minute Holding Pattern	
*LOC only.		TORYY FNT 4.3		2000		2000		2800	
FNT 0.6		*FNT 2		1.4 NM		2.3 NM		5.7 NM	
CATEGORY		A		B		C		D	
S-ILS 27		970-1/2		200 (200-1/2)					
S-LOC 27		1260-1/2		490 (500-1/2)		1260-1		490 (500-1)	
CIRCLING		1260-1 478 (500-1)		1300-1 518 (600-1)		1300-1 1/2 518 (600-1 1/2)		1520-2 1/4 738 (800-2 1/4)	