

VOR/DME ECG	APP CRS	Rwy Idg
115.75	270°	7219
Chan 104 (Y)		TDZE 10
		Apt Elev 11

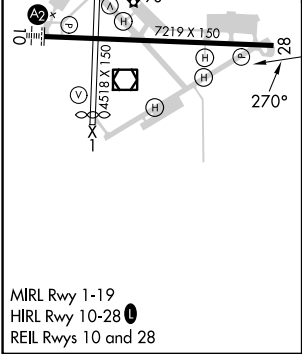
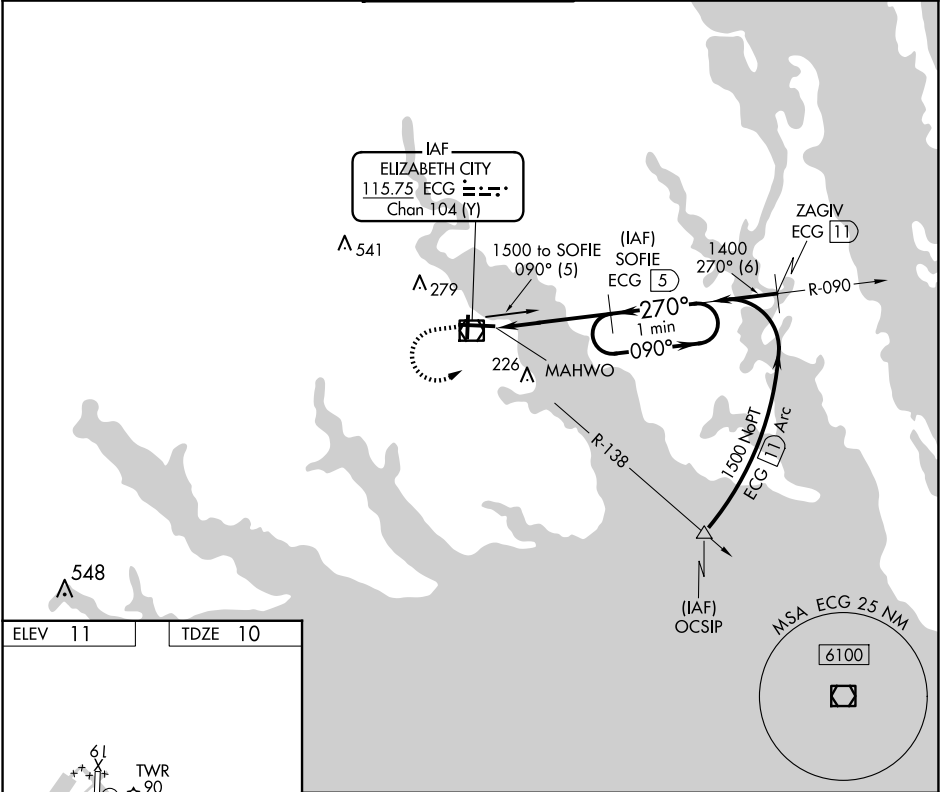
VOR/DME RWY 28

ELIZABETH CITY CG AIR STATION/RGNL (E/C/G)

Procedure NA when tethered balloon located approximately 2 miles southeast of airport is flying. When local altimeter setting not received, use Currituck altimeter setting and increase all MDAs 40 feet and S-28 visibility Cats C/D ½ SM. Rwy 28 helicopter visibility reduction below ¾ SM NA.

MISSED APPROACH: Climb to 1000 then climbing left turn to 1500 via ECG R-090 to SOFIE 5 DME and hold.

ASOS 124.375	NORFOLK APP CON 119.55 269,425	ELIZABETH CITY TOWER★ 120.5 (CTAF) 355.6	GND CON 121.9	UNICOM 122.95
------------------------	--	--	-------------------------	-------------------------



1000	1500	SOFIE ECG 5	One Minute Holding Pattern	
↑	ECG R-090			
MAHWO ECG 0.8				
270°		1400	090° →	1500
2.99°		TCH 51	← 270°	
4.2 NM				
CATEGORY	A	B	C	D
S-28	380-1 370 (400-1)			380-1¼ 370 (400-1¼)
CIRCLING	480-1	469 (500-1)	640-1¾ 629 (700-1¾)	640-2 629 (700-2)