

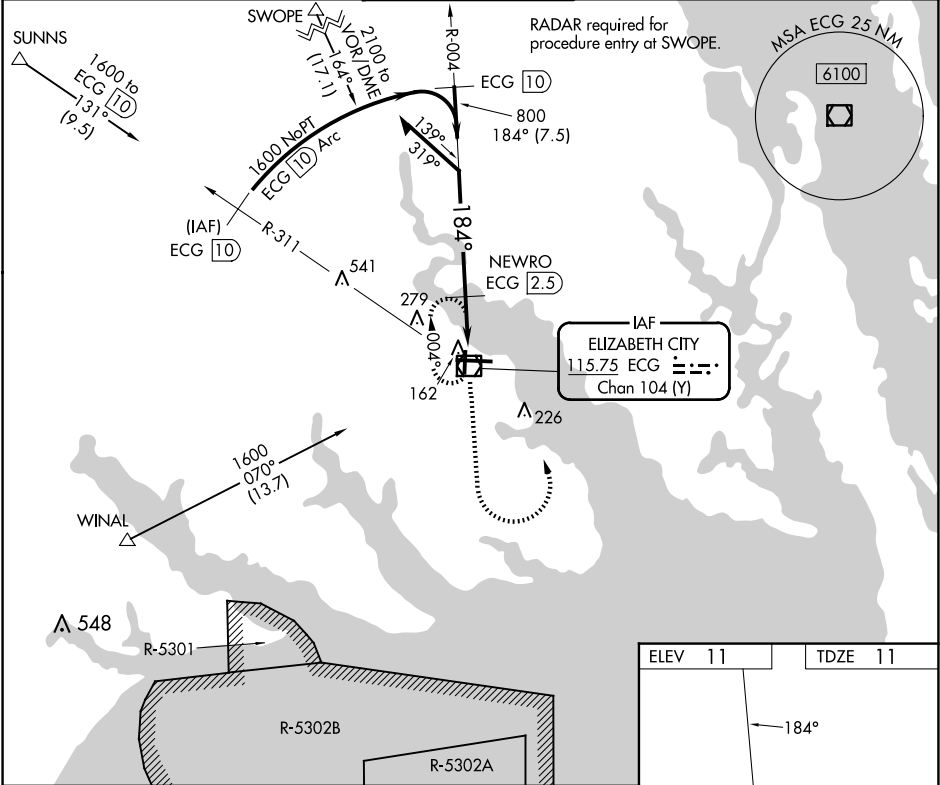
VOR/DME ECG	APP CRS	Rwy Idg
<b>115.75</b>	<b>184°</b>	<b>4518</b>
Chan <b>104</b> (Y)	TDZE	11
	Apt Elev	11

VOR/DME RWY 19

ELIZABETH CITY CG AIR STATION/RGNL (ECG)

<div><div>Procedure NA when tethered balloon located approximately 2 miles southeast of airport is flying. When local altimeter setting not received, use Currituck altimeter setting and increase all MDAs 40 feet.</div><div>MISSED APPROACH: Climb to 1600 then left turn direct ECG VOR/DME and hold.</div></div>
---

ASOS <b>124.375</b>	NORFOLK APP CON <b>119.55 269.425</b>	ELIZABETH CITY TOWER★ <b>120.5</b> (CTAF) <b>355.6</b>	GND CON <b>121.9</b>	UNICOM <b>122.95</b>
------------------------	--	---	-------------------------	-------------------------



VGSI and descent angles not coincident (VGSI Angle 2.75/TCH 30).				
Remain within 10 NM				
NEWRO ECG 2.5				
1600				
184°				
800				
3.49°				
TCH 59				
2 NM				
ECG 0.5				
CATEGORY	A	B	C	D
S-19	480-1	469 (500-1)	480-1 <sup>3</sup> / <sub>8</sub> 469 (500-1 <sup>3</sup> / <sub>8</sub> )	480-1 <sup>1</sup> / <sub>2</sub> 469 (500-1 <sup>1</sup> / <sub>2</sub> )
CIRCLING	480-1	469 (500-1)	640-1 <sup>3</sup> / <sub>4</sub> 629 (700-1 <sup>3</sup> / <sub>4</sub> )	640-2 629 (700-2)

