

| | | |
|--|------------------------|---|
| TACAN IAG Chan 47 (111.0) | APP CRS 286° | Rwy Idg TDZE 588 Apt Elev 592 |
|--|------------------------|---|

TACAN RWY 28R

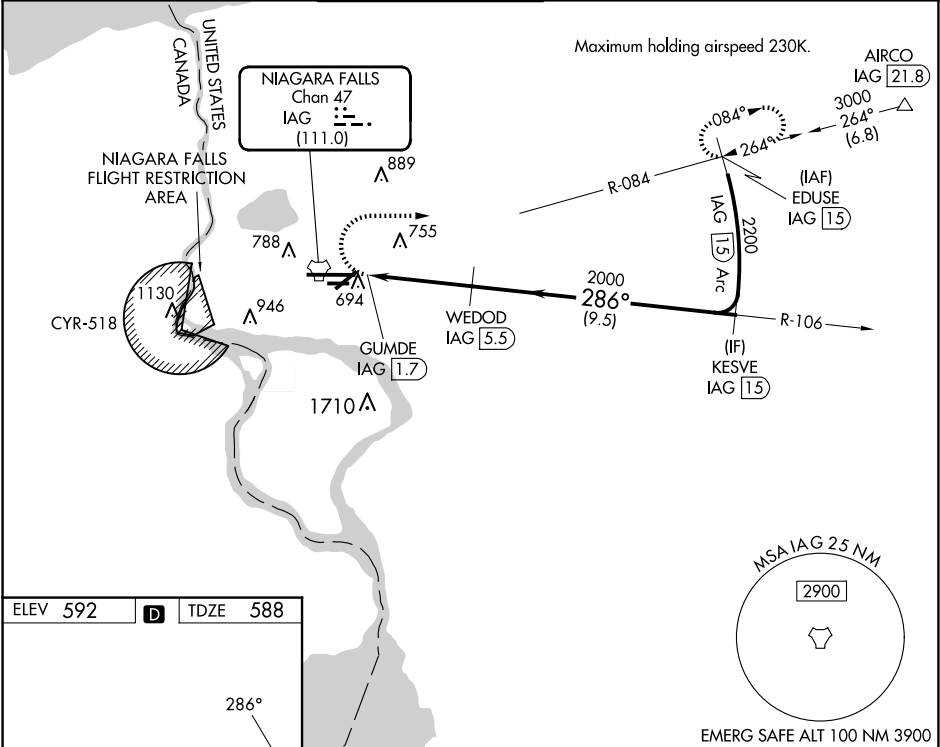
NIAGARA FALLS INTL (IAG)

▼ When local altimeter setting not received, use Buffalo Niagara Intl altimeter setting; increase all MDA 60 feet and S-28R visibility Cat C, D and E to RVR 4500 and Circling Cat C, D and E visibility ¼ SM. Circling NA for Cat E south of Rwy 10L-28R. For inop MALSR, increase S-28R Cat A/B visibility to RVR 5000 and Cat C/D/E to RVR 6000. Rwy 28R helicopter visibility reduction below ¾ SM NA. Rwy 6, 10R, 24, 28L helicopter visibility reduction below 1 SM NA. Circling Rwy 6, 10R, 24, 28L NA at night.

MALSR

MISSED APPROACH:
Climbing right turn to 3000 on heading 100° and IAG R-084 to EDUSE/IAG 15 DME and hold.

| | | | | | |
|----------------------------|---------------------------------------|---|-------------------------------|---------------------------------|-------------------------|
| ATIS 120.8 269.4 | BUFFALO APP CON 126.5 317.6 | NIAGARA TOWER★ 118.5 (CTAF) 0 349.0 | GND CON 125.3 275.8 | CLNC DEL 119.25 251.1 | UNICOM 122.95 |
|----------------------------|---------------------------------------|---|-------------------------------|---------------------------------|-------------------------|



ELEV 592 **D** TDZE 588

| | | | | | |
|---|------------------------|-----------------------|-------------------------|--|--------------|
| 3000 | hdg 100° | IAG R-084 | EDUSE IAG 15 | VGSI and descent angles not coincident (VGSI Angle 2.50/TCH 67). | KESVE IAG 15 |
| EMERG SAFE ALT 100 NM 3900 | | | | | |
| IAG TACAN GUMDE IAG 1.7 WEDOD IAG 5.5 2000 2200 286° | | | | | |
| 0.5 NM 3.8 NM 9.5 NM | | | | | |
| CATEGORY | A | B | C | D | E |
| S-28R | 1000/40 412 (500-¾) | | | | |
| CIRCLING | 1100-1 508 (600-1) | 1280-2 688 (700-2) | 1360-2½ 768 (800-2½) | 1360-2¾ 768 (800-2¾) | |

TDZ/CL Rwy 28R 0
REIL Rwys 6, 10R, 24, and 28L 0
HIRL Rwy 10L-28R 0
MIRL Rwys 6-24 and 10R-28L 0