

WAAS CH <b>90132</b> <b>W06A</b>	APP CRS <b>060°</b>	Rwy ldg TDZE <b>586</b> Apt Elev <b>592</b>
----------------------------------------	------------------------	---------------------------------------------------

RNAV (GPS) RWY 6

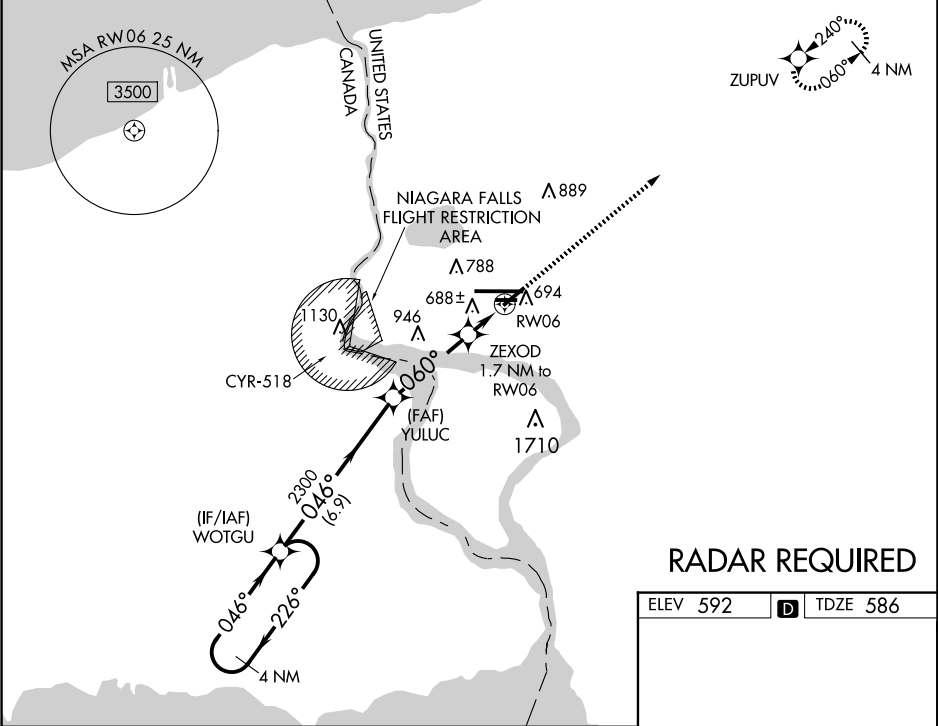
NIAGARA FALLS INTL (IAG)

RNP APCH

Baro-VNAV NA when using Buffalo Niagara Intl altimeter setting. For uncompensated Baro-VNAV systems, LNAV/VNAV NA below -18°C (0°F) or above 54°C (130°F). When local altimeter setting not received, use Buffalo Niagara Intl altimeter setting and increase all DA 51 feet and all MDA 60 feet, increase LNAV Cat C and D visibility ½ SM and Circling Cat C and D ¼ SM. Rwy 6, 10R, 24, 28L helicopter visibility reduction below 1 SM NA. Straight-in Rwy 6 NA at night, Circling Rwy 6, 10R, 24, 28L NA at night.

MISSED APPROACH:  
Climb to 3600 direct ZUPUV and hold.

ATIS <b>120.8 269.4</b>	BUFFALO APP CON <b>126.5 317.6</b>	NIAGARA TOWER★ <b>118.5 (CTAF) 0 349.0</b>	GND CON <b>125.3 275.8</b>	CLNC DEL <b>119.25 251.1</b>	UNICOM <b>122.95</b>
----------------------------	---------------------------------------	-----------------------------------------------	-------------------------------	---------------------------------	-------------------------



RADAR REQUIRED

ELEV 592    TDZE 586

TDZ/CL Rwy 28R  
REIL Rws 6, 10R, 24, and 28L  
HIRL Rwy 10L-28R  
MRL Rws 6-24 and 10R-28L