

WAAS CH 99432 W28B	APP CRS 280°	Rwy Idg 9129 TDZE 588 Apt Elev 592
--	------------------------	---

RNAV (GPS) RWY 28R
NIAGARA FALLS INTL (IAG)

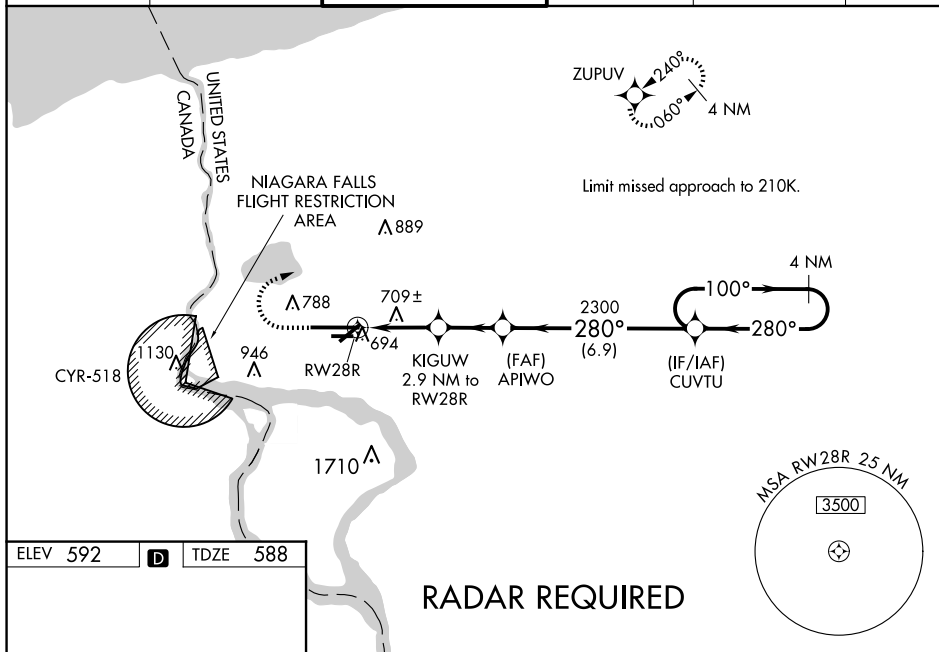
V For uncompensated Baro-VNAV systems, LNAV/VNAV NA below -18°C (0°F) or above 54°C (130°F): DME/DME RNP-0.3 NA. When local altimeter setting not received, use Buffalo Niagara Intl altimeter setting and increase all DA 51 feet and all MDA 50 feet; increase LNAV/VNAV all Cats visibility ½ SM and Circling Cat C and D ¼ SM. Baro-VNAV and VDP NA with Buffalo Niagara Intl altimeter setting. For inop MALSR increase LNAV/VNAV visibility all Cats to RVR 6000 and LNAV all Cats visibility to RVR 5500. For inop MALSR when using Buffalo Niagara Intl altimeter setting, increase LPV all Cats and LNAV Cats C/D visibility to RVR 5500 and LNAV/VNAV all Cats visibility to RVR 6000. Rwy 28R helicopter visibility reduction below ¾ SM NA. Rwy 6, 10R, 24, 28L, helicopter visibility reduction below 1 SM NA. Circling Rwy 6, 10R, 24, 28L, NA at night.

MALSR

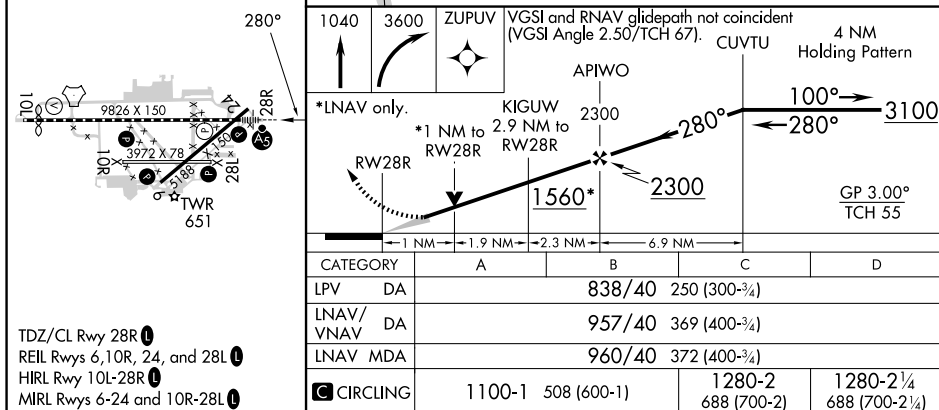


MISSED APPROACH:
Climb to 1040 then
climbing right turn to
3600 direct ZUPUV
and hold, continue
climb-in-hold to 3600

ATIS	BUFFALO APP CON	NIAGARA TOWER★	GND CON	CLNC DEL	UNICOM
120.8 269.4	126.5 317.6	118.5 (CTAF) 0 349.0	125.3 275.8	119.25 251.1	122.95



RADAR REQUIRED



NIAGARA FALLS, NEW YORK
Orig-B 18JUN20

43°06'N-78°57'W

NIAGARA FALLS INTL (IAG)

RNAV (GPS) RWY 28R

NE-2, 07 AUG 2025 to 04 SEP 2025

NE-2, 07 AUG 2025 to 04 SEP 2025