

WAAS CH 66034 W10A	APP CRS 120°	Rwy ldg TDZE 589 Apt Elev 592
--	------------------------	---

RNAV (GPS) RWY 10L

NIAGARA FALLS INTL (IAG)

▼

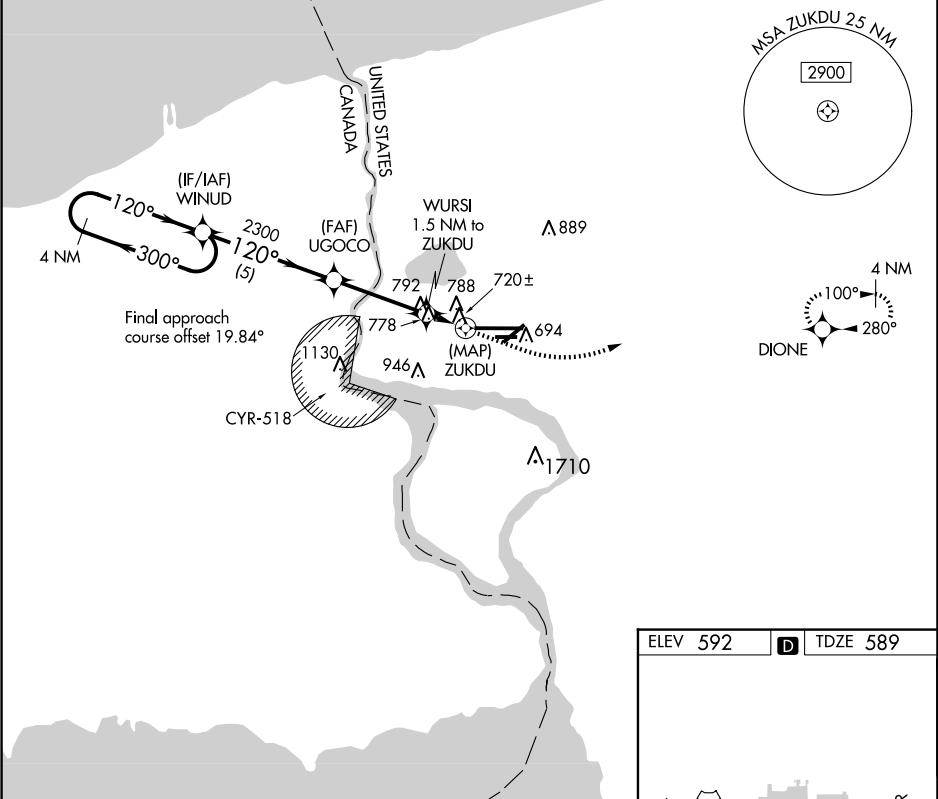
DME/DME RNP-0.3 NA. VDP NA with Buffalo Niagara Intl altimeter setting. When local altimeter setting not received, use Buffalo Niagara Intl altimeter setting and increase all MDA 60 feet.

⚠

Increase LP Cats C/D and Circling Cats C/D visibility ¼ mile. Rwy 10L helicopter visibility reduction below ¾ SM NA. Rwy 6, 10R, 24, 28L helicopter visibility reduction below 1 SM NA. Circling Rwy 6, 10R, 24, 28L NA at night.

MISSED APPROACH: Climb to 1100 then climbing left turn to 3600 direct DIONE and hold.

ATIS 120.8 269.4	BUFFALO APP CON 126.5 317.6	NIAGARA TOWER ★ 118.5 (CTAF) 0 349.0	GND CON 125.3 275.8	CLNC DEL 119.25 251.1	UNICOM 122.95
----------------------------	---------------------------------------	--	-------------------------------	---------------------------------	-------------------------



4 NM Holding Pattern

VGSI and descent angles not coincident (VGSI Angle 3.00/TCH 50).

1100 3600 DIONE

WINUD UGOCO WURSI 1.5 NM to ZUKDU 0.6 NM to ZUKDU ZUKDU

3100 300° 120° 2300 1220

5 NM 3.5 NM 0.9 NM 0.6 NM 0.5

CATEGORY	A	B	C	D
LP MDA	980-1 391 (400-1)	980-1½ 391 (400-1½)	1040-1¾ 451 (500-1¾)	1280-2 688 (700-2)
LNAV MDA	1040-1 451 (500-1)	1040-1¾ 451 (500-1¾)	1280-2¼ 688 (700-2¼)	
CIRCLING	1100-1 508 (600-1)			

ELEV 592 D TDZE 589

The inset chart shows the airport layout with runways 10L, 10R, 28L, and 28R. It also shows the tower (TWR 651) and the DIONE VORTAC. The chart includes altitudes for various points and the surrounding terrain.

TDZ/CL Rwy 28R 0

REIL Rws 6, 10R, 24, and 28L 0

HIRL Rwy 10L-28R 0

MIRL Rws 6-24 and 10R-28L 0