

LOM IA <u>329</u>	APP CRS 280°	Rwy Idg 9129 TDZE 588 Apt Elev 592
-----------------------------	------------------------	---

NDB RWY 28R
NIAGARA FALLS INTL (IAG)

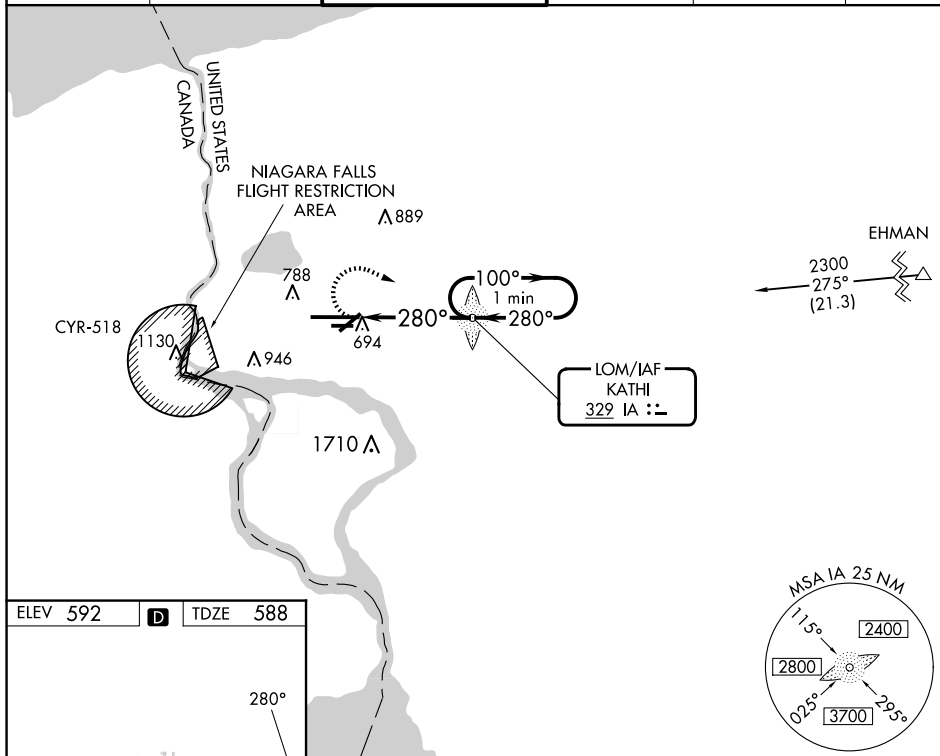
⚠ When local alimeter setting not received, use Buffalo Niagara Intl alimeter setting and increase all MDA 60 feet, increase S-28R Cat C and D visibility $\frac{1}{8}$ SM and Circling Cat C and D $\frac{1}{4}$ SM. For Inop MALSR, increase S-28R Cats A/B visibility to RVR 5500 and Cats C/D visibility to 1 $\frac{1}{2}$. For inop MALSR when using Buffalo Niagara Intl alimeter setting, increase S-28R Cats C/D visibility to 1 $\frac{1}{2}$. Rwy 28L helicopter visibility reduction below $\frac{3}{4}$ SM NA. Rwy 6, 10R, 24, 28L helicopter visibility reduction below 1 SM NA. Circling Rwy 6, 10R, 24, 28L NA at night.

MALSR

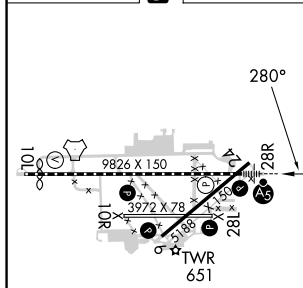


MISSED APPROACH:
Climbing right turn to
3200 direct KATHI LOM
and hold, continue
climb-in-hold to 3200.

ATIS 120.8 269.4	BUFFALO APP CON 126.5 317.6	NIAGARA TOWER★ 118.5 (CTAF) 0 349.0	GND CON 125.3 275.8	CLNC DEL 119.25 251.1	UNICOM 122.95
---------------------	--------------------------------	--	------------------------	--------------------------	------------------



ELEV 592	D	TDZE 588
----------	----------	----------



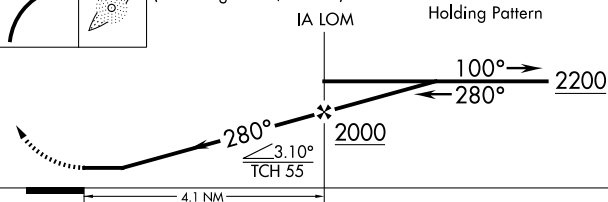
TDZ/CL Rwy 28R **L**
REIL Rwys 6, 10R, 24, and 28L **L**
HIRL Rwy 10L-28R **L**
MIRL Rws 6-24 and 10R-28L **L**


FAF to MAP 4.1 NM

Knots	60	90	120	150	180
Min:Sec	4:06	2:44	2:03	1:38	1:22

3200	IA	VGSI and descent angles not coincident (VGSI Angle 2.50/TCH 67).
------	----	--

One Minute Holding Pattern



CATEGORY	A	B	C	D
S-28R	1200/40 612 (700-¾)		1200-1 ⅓ 612 (700-1⅓)	
 CIRCLING	1200-1 608 (700-1)		1280-2 688 (700-2)	1280-2¼ 688 (700-2¼)