

LOC I- IAG	APP CRS	Rwy ldg	9129
110.1	280°	TDZE	588
		Apt Elev	592

ILS Y or LOC Y RWY 28R

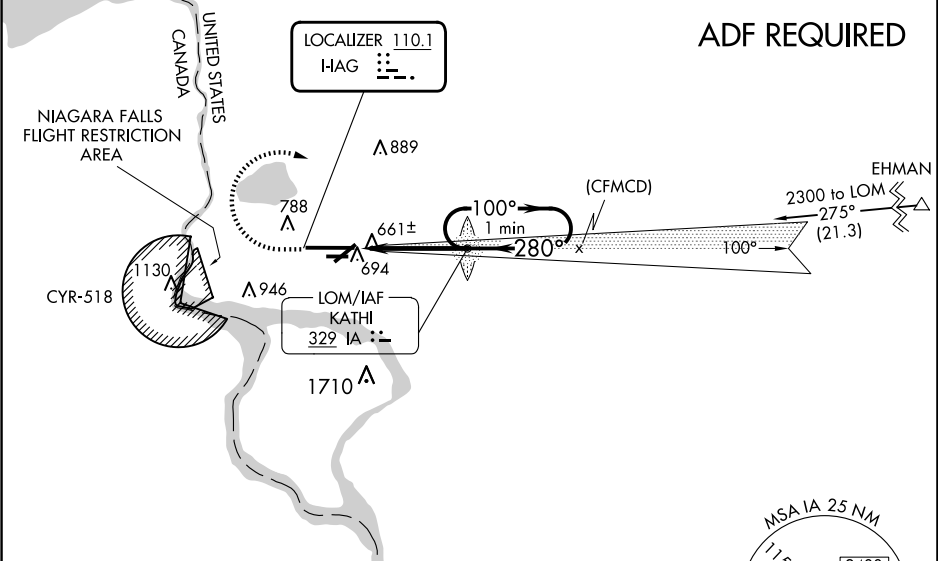
NIAGARA FALLS INTL (IAG)

ADF Required. When local altimeter setting not received, use Buffalo Niagara Intl altimeter setting and increase all DA 51 feet and all MDA 60 feet; increase Circling Cat C and D visibility ¼ SM. For inop MALS, increase S-ILS 28R all Cats visibility to RVR 4500 and S-LOC 28R all Cats visibility to RVR 5000. For inop MALS when using Buffalo Niagara Intl altimeter setting, increase S-ILS 28R all Cats visibility to RVR 4500, S-LOC 28R Cats A/B visibility to RVR 5000, and S-LOC 28R Cats C/D visibility to RVR 6000. Rwy 28R helicopter visibility reduction below ¾ SM NA. Rwy 6, 10R, 24, 28L helicopter visibility reduction below 1 SM NA. Circling Rwy 6, 10R, 24, 28L NA at night.

MALS

MISSED APPROACH:
Climb to 1200 then climbing right turn to 3200 on heading 050° then direct KATHI LOM and hold.

ATIS	BUFFALO APP CON	NIAGARA TOWER★	GND CON	CLNC DEL	UNICOM
120.8 269.4	126.5 317.6	118.5 (CTAF) 0 349.0	125.3 275.8	119.25 251.1	122.95



ELEV 592 D TDZE 588

TDZ/CL Rwy 28R ①
REIL Rws 6,10R, 24, and 28L ①
HIRL Rwy 10L-28R ①
MIRL Rws 6-24 and 10R-28L ①

FAF to MAP 4.1 NM

Knots	60	90	120	150	180
Min:Sec	4:06	2:44	2:03	1:38	1:22

1200 3200 IA

↑ hdg 050°

IA LOM

1763

One Minute Holding Pattern

GS 2.50°

TCH 67

CATEGORY	A	B	C	D
S-ILS 28R		838/40	250 (300-¾)	
S-LOC 28R		920/40	332 (400-¾)	
CIRCLING	1100-1	508 (600-1)	1280-2 688 (700-2)	1280-2 ¼ 688 (700-2 ¼)