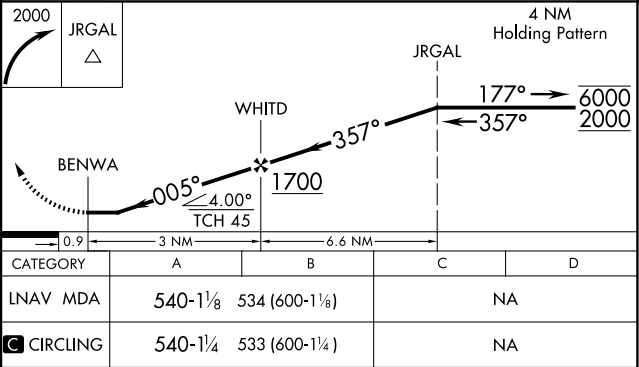
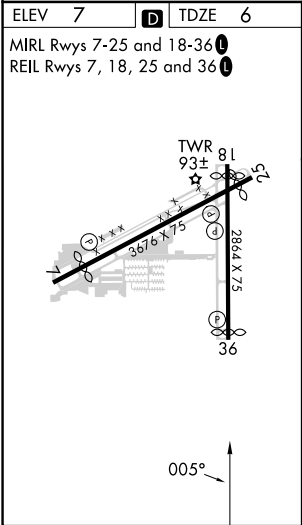
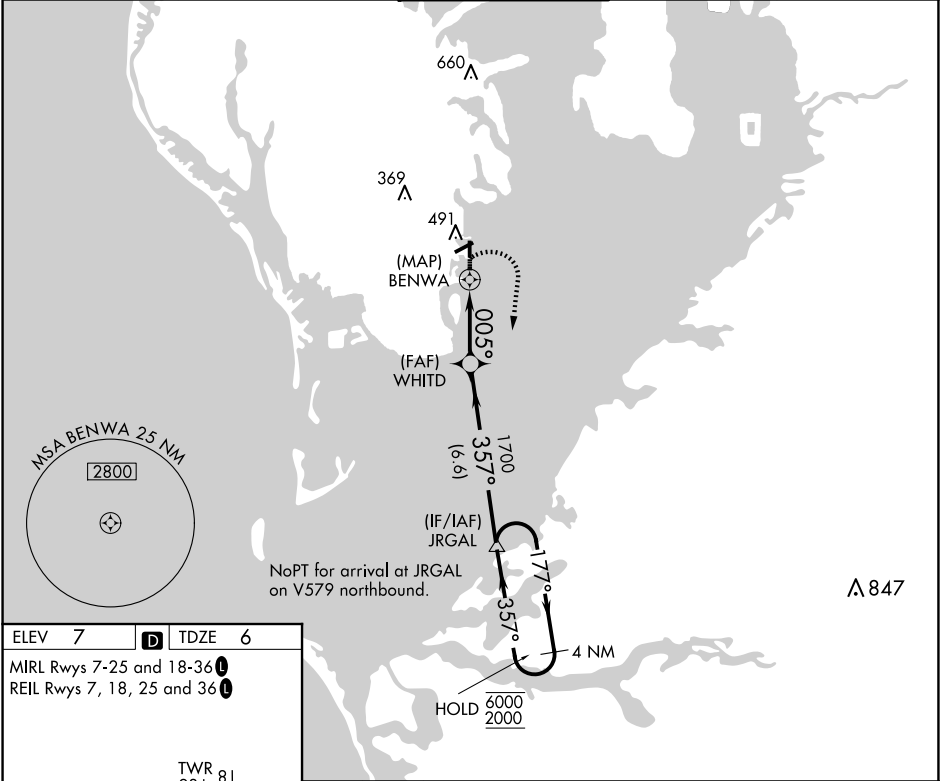


APP CRS	Rwy Idg	2559
005°	TDZE	6
	Apt Elev	7

RNAV (GPS) RWY 36
ALBERT WHITTED (SPG)

RNP APCH - GPS.	MISSED APPROACH: Climbing right turn to 2000 direct JRGAL and hold.
<div>▼ Circling NA northwest of Rwys 7 and 18. Procedure NA at night.</div> <div>▲ Rwy 36 helicopter visibility reduction below 1 SM NA.</div>	

ASOS 118.875	TAMPA APP CON 119.65 316.05 (EAST) 125.3 316.05 (WEST)	WHITTED TOWER ★ 127.4 (CTAF) 0 257.6	GND CON 121.8	UNICOM 122.95
-----------------	--	---	------------------	------------------



SE-3, 07 AUG 2025 to 04 SEP 2025

SE-3, 07 AUG 2025 to 04 SEP 2025