

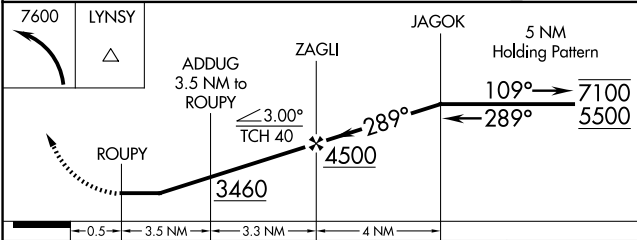
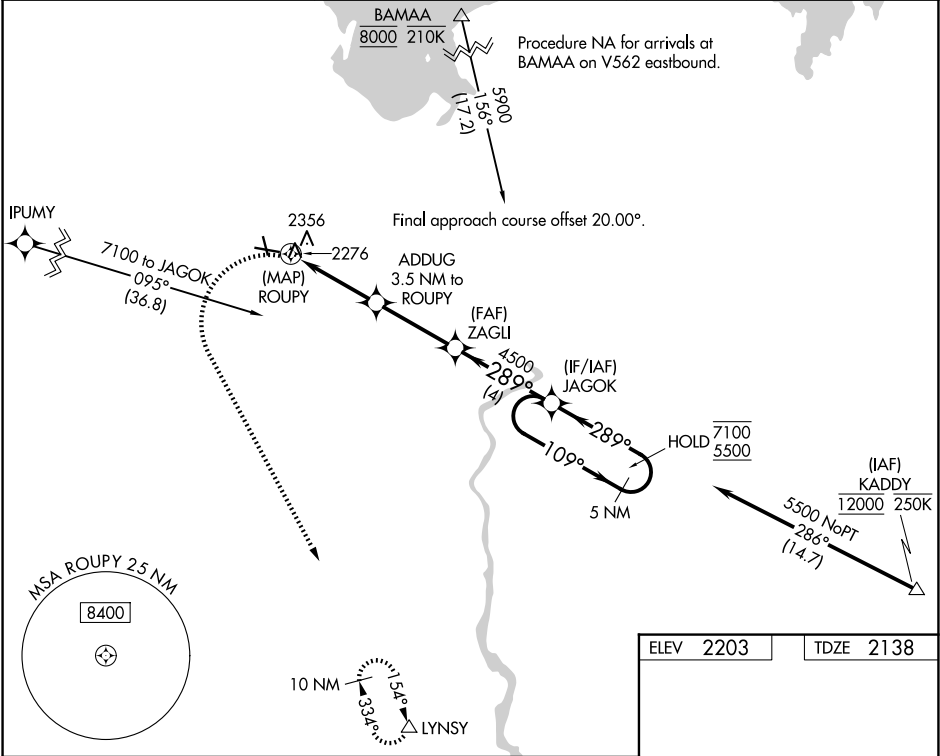
WAAS CH <b>77643</b> <b>W27A</b>	APP CRS <b>289°</b>	Rwy Ldg TDZE <b>2138</b> Apt Elev <b>2203</b>
--	------------------------	---

RNAV (GPS) RWY 27

BOULDER CITY MUNI (BVU)

RNP APCH.	MISSED APPROACH: Climbing left turn to 7600 direct LYNZY and hold, continue climb-in-hold to 7600.
<div>Procedure NA at night. Rwy 27 helicopter visibility reduction below 1 SM NA.</div>	

AWOS-3 <b>118.475</b>	LAS VEGAS APP CON <b>125.475 307.25</b>	UNICOM <b>122.7 (CTAF) 1</b>
--------------------------	--	---------------------------------



CATEGORY	A	B	C	D
LP MDA	2640-1	502 (500-1)	2640-1 3/8 502 (500-1 3/8)	NA
LNAV MDA	2940-1 802 (800-1)	2940-1 1/4 802 (800-1 1/4)	2940-2 1/2 802 (800-2 1/2)	NA
CIRCLING	2980-1 1/4 777 (800-1 1/4)	3360-1 1/2 1157 (1200-1 1/2)	4000-3 1797 (1800-3)	NA

ELEV 2203

TDZE 2138

Diagram of the runway layout showing Runways 9-27 and 15-33. Key altitudes and distances are marked, including 3852 x 75, 5103 x 75, 27, 33, 289°, and 0.6% UP.

MIRL Rwy 9-27 and 15-33 1  
REIL Rwy 9, 15, 27 and 33