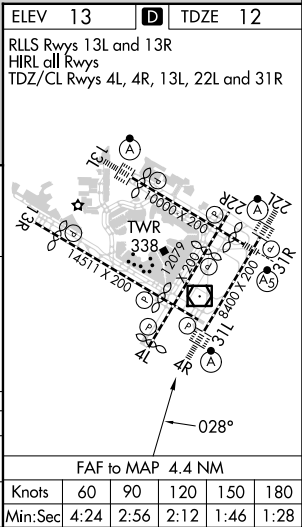
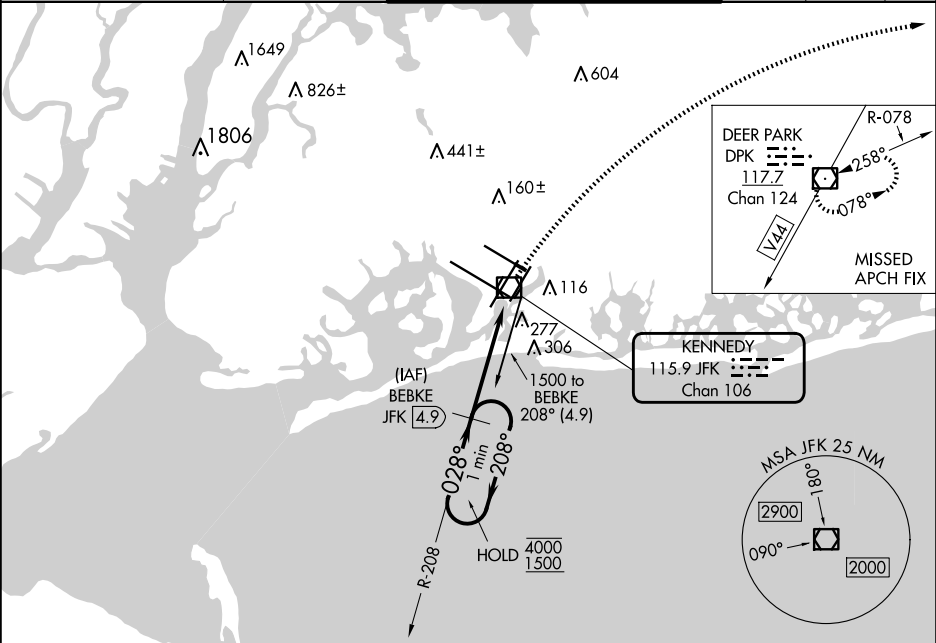


VOR/DME JFK	APP CRS	Rwy Idg	8400
115.9	028°	TDZE	12
Chan 106		Apt Elev	13

VOR RWY 4R

JOHN F KENNEDY INTL (JFK)

DME or RADAR required for procedure entry.			ALSF-2	MISSED APPROACH: Climbing right turn to 4000 on heading 100° and V44 to DPK VOR/DME and hold.		
D-ATIS (ARR/DEP) (ARR-NE) (ARR-SW)			NEW YORK APP CON		KENNEDY TOWER	
128.725 117.7 115.4			128.125 269.0		Rwys 4R/22L and 13L/31R 119.1 281.55	
					Rwys 4L/22R and 13R/31L 123.9 281.55	
					GND CON	CLNC DEL
					121.9	135.05
					348.6	348.6
					CPDLC	



VGSI and descent angles not coincident (VGSI Angle 3.00/TCH 69).				4000	DPK
One Minute Holding Pattern				hdg 100°	
4000 ← 208° 1500 → 028°				V44	
BEBKE JFK 4.9				JFK 1.9	JFK 0.4
3.04° TCH 53				2.9 NM	
				1.5	
CATEGORY	A	B	C	D	
S-4R	540/24	528 (600-½)	540/50 528 (600-1)	540/60 528 (600-1¼)	
CIRCLING	640-1	627 (700-1)	680-1¾ 667 (700-1¾)	680-2 667 (700-2)	