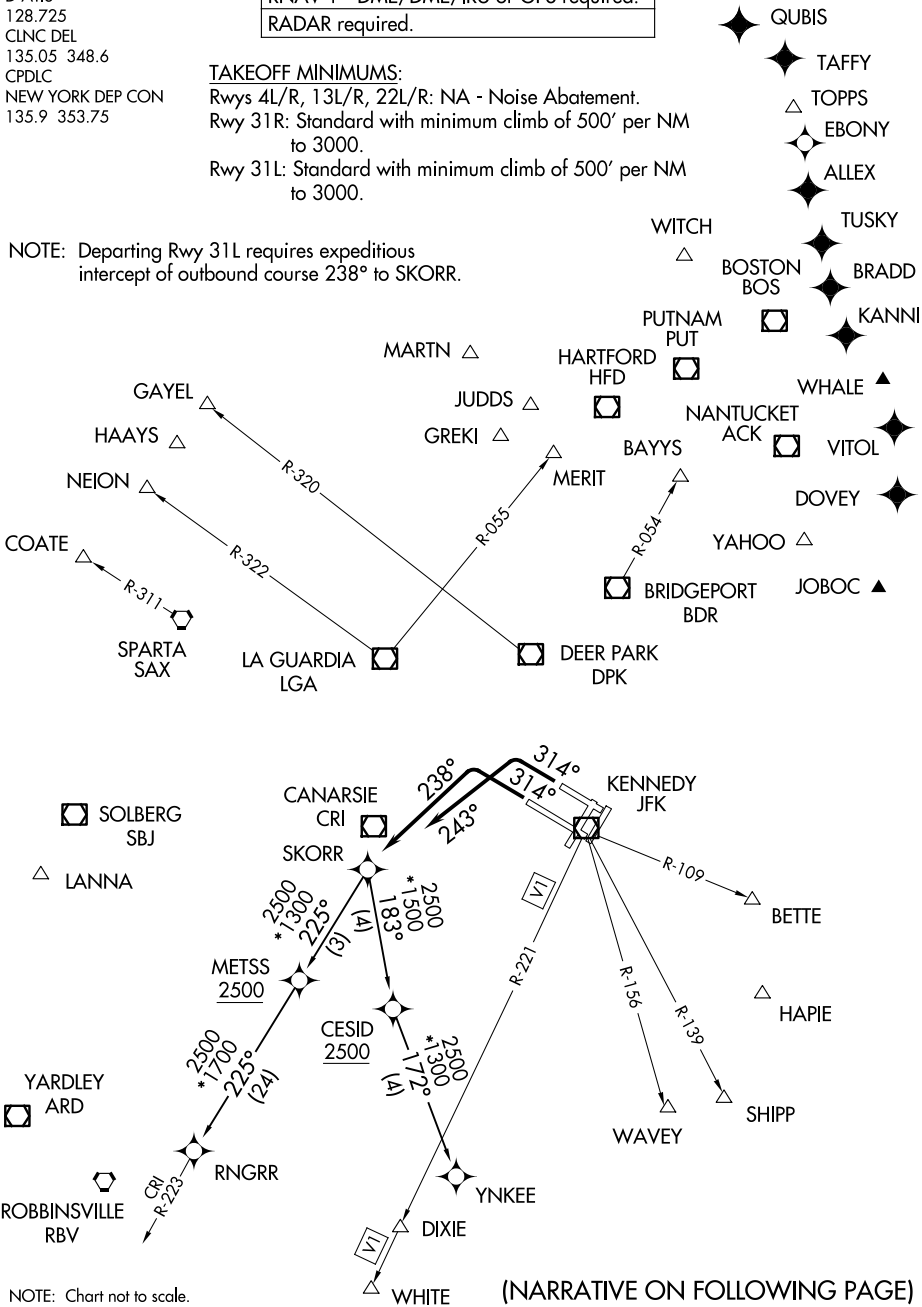


D-ATIS  
128.725  
CLNC DEL  
135.05 348.6  
CPDLC  
NEW YORK DEP CON  
135.9 353.75

RNAV 1 - DME/DME/IRU or GPS required.  
RADAR required.

TAKEOFF MINIMUMS:  
Rwys 4L/R, 13L/R, 22L/R: NA - Noise Abatement.  
Rwy 31R: Standard with minimum climb of 500' per NM to 3000.  
Rwy 31L: Standard with minimum climb of 500' per NM to 3000.

NOTE: Departing Rwy 31L requires expeditious intercept of outbound course 238° to SKORR.



(NARRATIVE ON FOLLOWING PAGE)