

WAAS CH <b>45519</b> <b>W31B</b>	APP CRS <b>314°</b>	Rwy ldg <b>8486</b> TDZE <b>13</b> Apt Elev <b>13</b>
--	------------------------	---

RNAV (GPS) Y RWY 31R

JOHN F KENNEDY INTL (JFK)

RNP APCH.

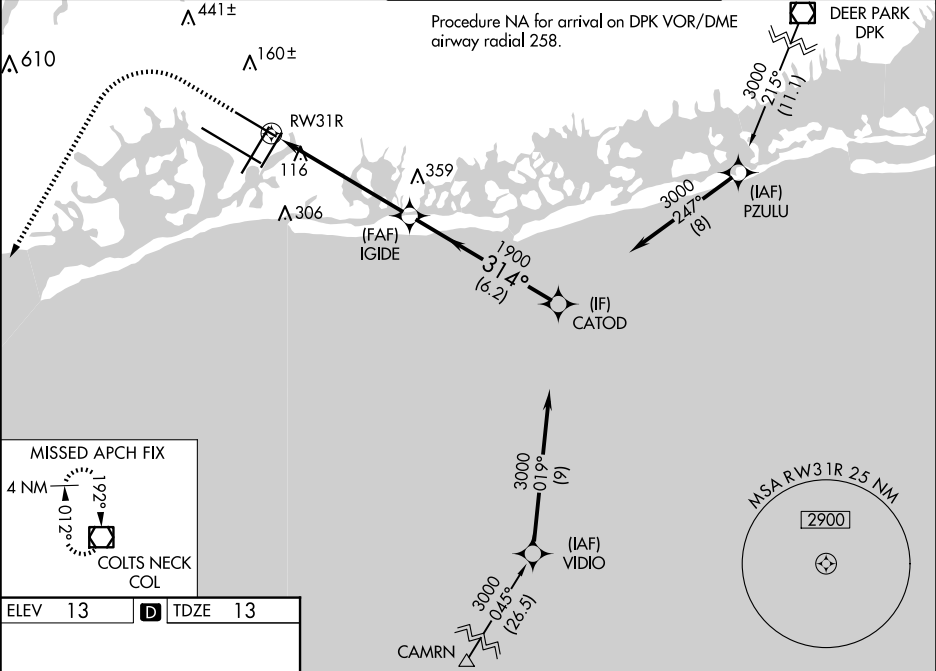
Simultaneous approach authorized. For uncompensated Baro-VNAV systems, LNAV/VNAV NA below -12°C or above 54°C. Minimum altitude at CATOD 2000 when authorized by ATC. Use of FD or AP required during simultaneous operations. LNAV procedure NA during simultaneous operations. For inop ALS, increase LNAV/VNAV all Cats visibility to RVR 5500.

MALSR

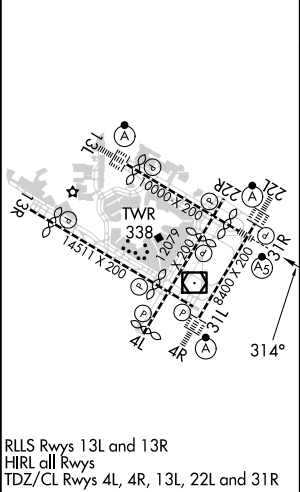
MISSED APPROACH:

Climb to 1800 then climbing left turn to 4000 direct COL VOR/DME and hold.

D-ATIS (ARR/DEP) (ARR-NE) (ARR-SW)	NEW YORK APP CON	KENNEDY TOWER	GND CON	CLNC DEL	CPDLC
<b>128.725 117.7 115.4</b>	<b>128.125 269.0</b>	Rwys 4R/22L and 13L/31R <b>119.1 281.55</b> Rwys 4L/22R and 13R/31L <b>123.9 281.55</b>	<b>121.9 348.6</b>	<b>135.05 348.6</b>	



ELEV 13	<b>D</b>	TDZE 13
---------	----------	---------



1800	4000	COL	VGSI and RNAV glidepath not coincident (VGSI Angle 3.00/TCH 54).	CATOD
<div>*LNAV only.</div>	<div>*1.2 NM to RWY 31R</div>	<div>1900</div>	<div>314°</div>	<div>3000</div>
<div>1.2 NM</div>	<div>4.6 NM</div>	<div>6.2 NM</div>	<div>GP 3.00° TCH 49°</div>	
CATEGORY	A	B	C	D
LPV DA	213/18 200 (200-½)			
LNAV/VNAV DA	369/35 356 (400-¾)			
LNAV MDA	460/24	447 (500-½)	460/45	447 (500-¾)
<div>CIRCLING</div>	640-1	627 (700-1)	680-1¾ 667 (700-1¾)	680-2 667 (700-2)

NE-2, 07 AUG 2025 to 04 SEP 2025

NE-2, 07 AUG 2025 to 04 SEP 2025