

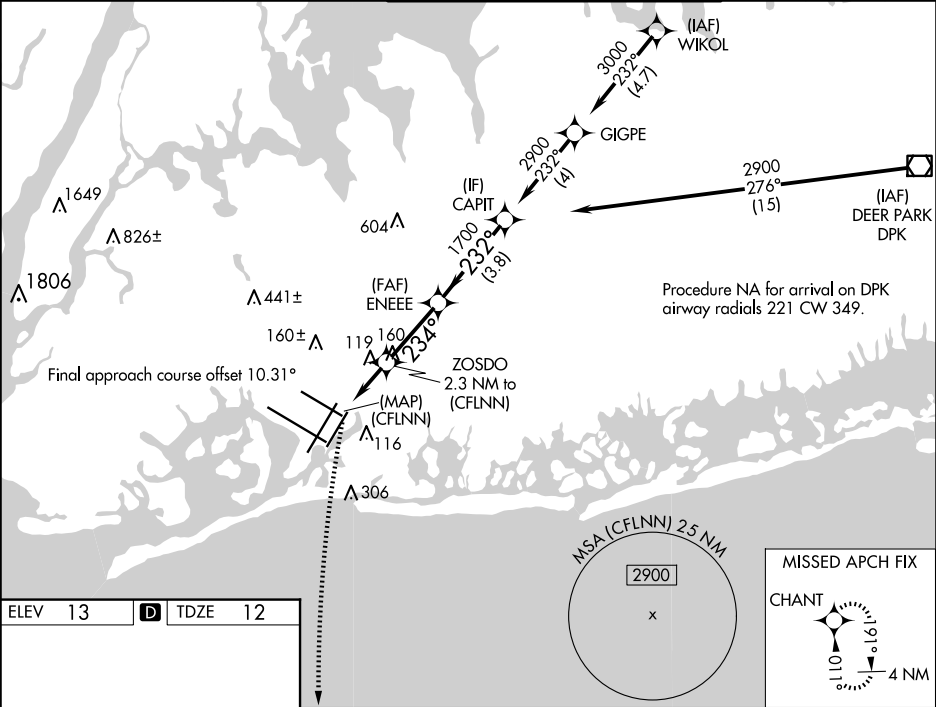
APP CRS	Rwy Idg	8400
234°	TDZE	12
	Apt Elev	13

RNAV (GPS) X RWY 22L

JOHN F KENNEDY INTL (JFK)

RNP APCH - GPS.	ALSF-2	MISSED APPROACH: Climbing left turn to 3000 direct CHANT and hold.
<div><div></div><div>For uncompensated Baro-VNAV systems, LNAV/VNAV NA below -14°C or above 54°C. For inop ALS, increase LNAV/VNAV all Cats visibility to RVR 6000.</div></div>	<div><div></div></div>	

D-ATIS (ARR/DEP) (ARR-NE) (ARR-SW)	NEW YORK APP CON	KENNEDY TOWER	GND CON	CLNC DEL	CPDLC
128.725 117.7 115.4	128.125 269.0	Rwys 4R/22L and 13L/31R 119.1 281.55 Rwys 4L/22R and 13R/31L 123.9 281.55	121.9 348.6	135.05 348.6	



3000

CHANT

VGSI and RNAV glidepath not coincident (VGSI Angle 3.00/TCH 66).

234°

232°

234°

\*LNAV only.

\*1.1 NM to (CFLNN)

2.3 NM to (CFLNN)

(CFLNN)

800\*

1.1 NM

1.2 NM

2.8 NM

3.8 NM

ZOSDO

ENEEE

CAPIT

1700

1700

2900

GP 3.00° TCH 55

CATEGORY	A	B	C	D
LNAV/VNAV DA	413/40	401 (400-¾)		
LNAV MDA	440/24 428 (500-½)	440/40 428 (500-¾)		
CIRCLING	640-1 627 (700-1)	680-1¾ 667 (700-1¾)	680-2 667 (700-2)	

RLS Rwy's 13L and 13R

HIRL all Rwy's

TDZ/CL Rwy's 4L, 4R, 13L, 22L and 31R