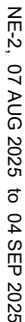


NEW YORK, NEW YORK



NEW YORK APP CON	RNAV 1 - DME/DME/IRU or GPS.
125.7 269.0	
IFK D-ATIS	RADAR required.

ARRIVAL ROUTE DESCRIPTION

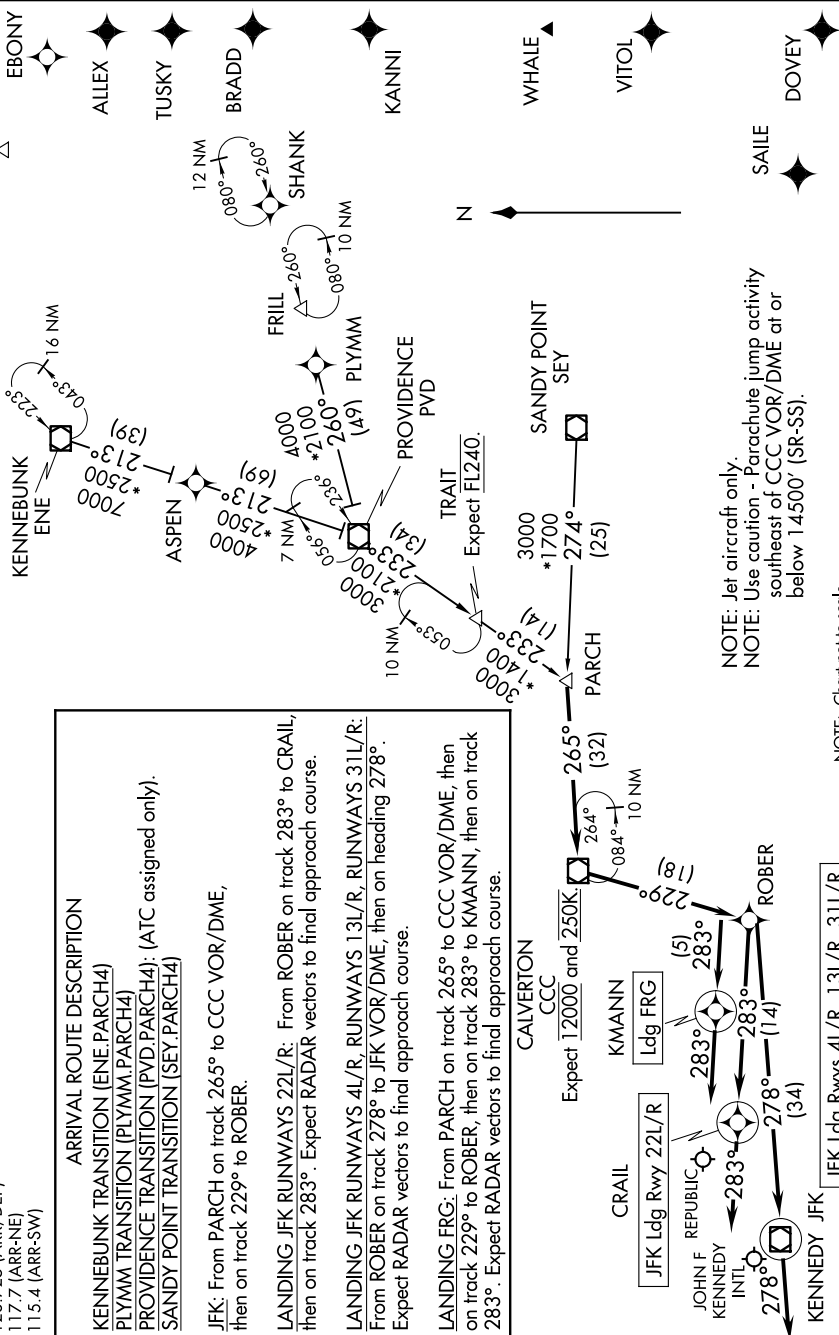
KENNEBUNK TRANSITION (ENE.PARCH4)
PLYMM TRANSITION (PLYMM.PARCH4)
PROVIDENCE TRANSITION (PVD.PARCH4): (ATC assigned only).

JFK: From PARCH on track 265° to CCC VOR/DME,
then on track 229° to ROBER.

LANDING JFK RUNWAYS 22L/R: From ROBER on track 283° to CRAIL, then on track 283°. Expect RADAR vectors to final approach course.

LANDING JFK RUNWAYS 4L/R, RUNWAYS 13L/R, RUNWAYS 31L/R:
From ROBER on track 278° to JFK VOR/DME, then on heading 278°.
Expect RADAR vectors to final approach course.

LANDING FRG: From PARCH on track 265° to CCC VOR/DME, then on track 229° to ROBER, then on track 283° to KMANIN, then on track 283°. Expect RADAR vectors to final approach course.



NOTE: Jet aircraft only.
NOTE: Use caution - Parachute jump activity southeast of CCC VOR/DME at or below 14500' (SR-SS).

NOTE: Chart not to scale.

NE-2, 07 AUG 2025 to 04 SEP 2025

NEW YORK, NEW YORK