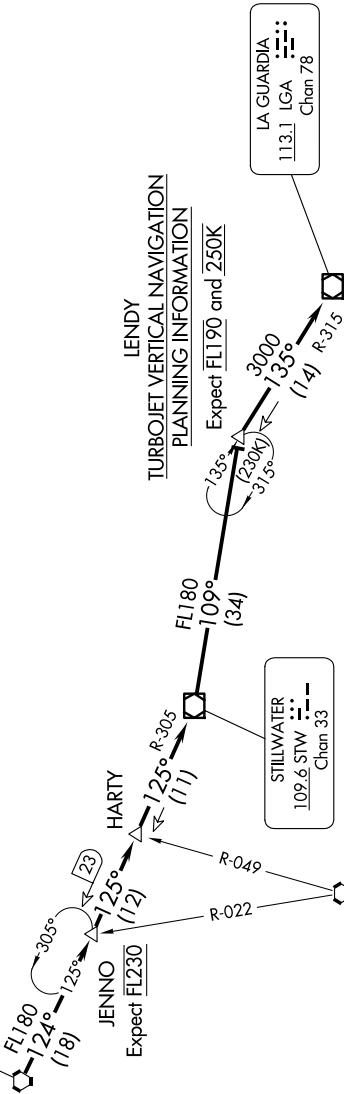


NE-2, 07 AUG 2025 to 04 SEP 2025

NEW YORK APP CON
128.125 269.0
FRG ATIS
126.65
JFK D-ATIS
128.725 (ARR/DEP)
117.7 (ARR-NE)
115.4 (ARR-SW)

NOTE: STAR applicable to Turbojet and Turboprop aircraft capable of operating at 250K or greater at FL190.
NOTE: DME required.
NOTE: RADAR required.

WILKES-BARRE
111.6 LVZ
Chon 53



ARRIVAL ROUTE DESCRIPTION

From over LVZ VORTAC on LVZ R-124 to JENNO INT, then on STW R-305 to HARTY INT, then on STW R-305 to STW VOR/DME, then on STW R-109 to LENDY, then on LGA R-315 to LGA VOR/DME. Expect RADAR vectors to final approach course after LGA VOR/DME.

NOTE: Chart not to scale.

NE-2, 07 AUG 2025 to 04 SEP 2025