

LOC/DME 1-WY	APP CRS	Rwy Idg	8400
110.9		TDZE	12
Chan 46	224°	Apt Elev	13

ILS or LOC RWY 22L
JOHN F KENNEDY INTL (JFK)

RNAV 1-GPS or RADAR required for procedure entry.

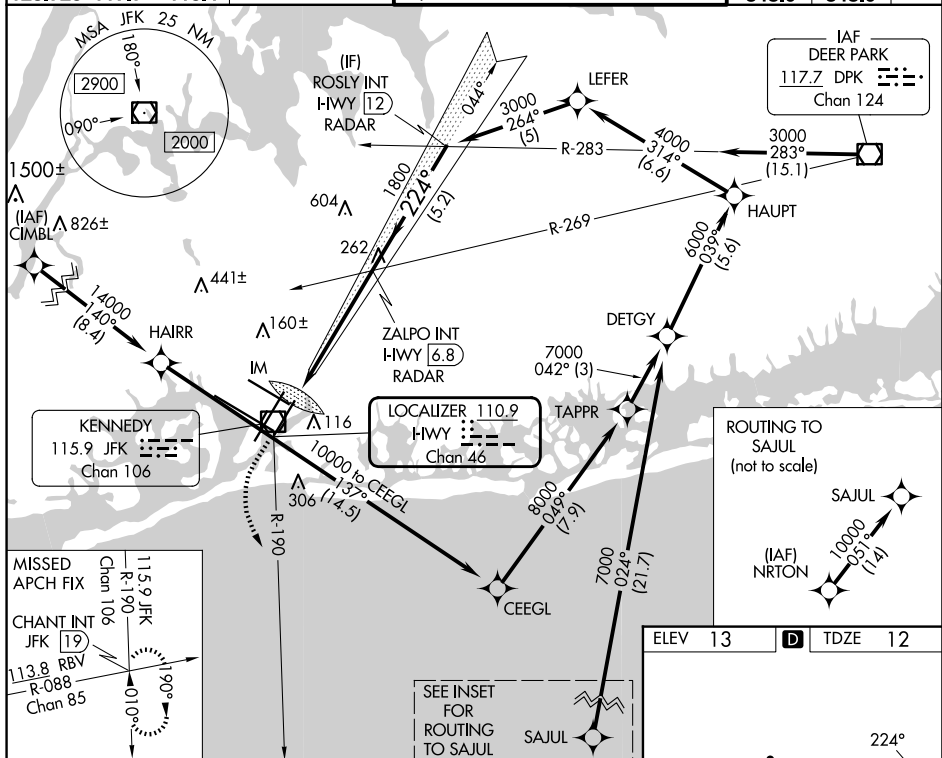
From CIMBL, NRTON: RNAV 1-GPS required.

ALSF-2

MISSED APPROACH: Climb to 500 then climbing left turn to 3000 on JFK VOR/DME R-190 to CHANT INT/19 DME and hold.

T Simultaneous approach authorized.

D-ATIS (ARR/DEP) (ARR-NE) (ARR-SW)			NEW YORK APP CON		KENNEDY TOWER			GND CON	CLNC DEL	CPDLC
128.725	117.7	115.4	128.125	269.0	Rwys 4R/22L and 13L/31R	119.1	281.55	121.9	135.05	
					Rwys 4L/22R and 13R/31L	123.9	281.55	348.6	348.6	



<div><div>500 ↑</div><div>3000 JFK R-190</div></div>		CHANT INT		VGSI and ILS glidepath not coincident (VGSI Angle 3.00/TCH 66).		ROSLY INT HWY 12 RADAR			
*LOC only.		*I-HWY 2.8		1800		3000			
<div><div>I-HWY 1.4</div><div>IM</div></div>				224°		GS 3.00° TCH 53			
0.2		1.2 NM		4.1 NM		5.2 NM			
CATEGORY		A		B		C		D	
S-ILS 22L				212/18		200 (200-1/2)			
S-LOC 22L		520/24		508 (600-1/2)		520/55		508 (600-1)	
CIRCLING		640-1		627 (700-1)		680-1 3/4 667 (700-1 3/4)		680-2 667 (700-2)	

ILS or LOC RWY 22L