

WAAS CH 49006 W29A	APP CRS 287°	Rwy Ldg TDZE Apt Elev 9800 2 4
--	------------------------	--

RNAV (GPS) Y RWY 29

LOUIS ARMSTRONG NEW ORLEANS INTL (MSY)

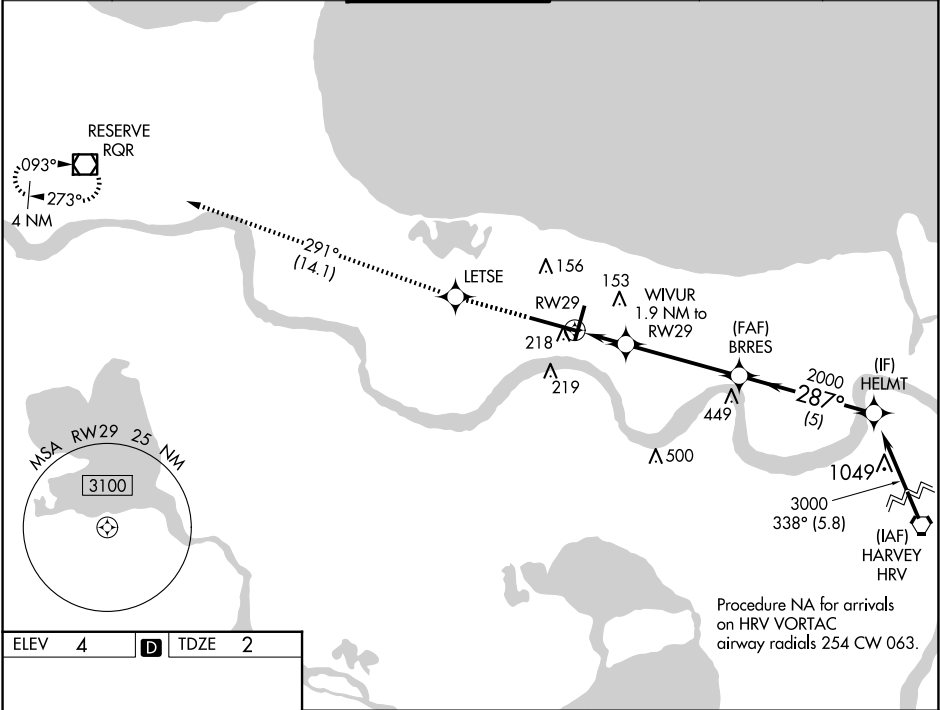
▼ For uncompensated Baro-VNAV systems, LNAV/VNAV NA below -1°C (31°F) or above 54°C (130°F). DME/DME RNP-0.3 NA. For inop MALSR, increase LNAV Cat C/D visibility to 1½ mile.
**RVR 1800 authorized with use of FD or AP or HUD to DA.

MALSR

AS

MISSED APPROACH: Climb to 3000 direct LETSE and on track 291° to RQR VOR/DME and hold.

D-ATIS 127.55	NEW ORLEANS APP CON WEST 125.5 350.35 EAST 133.15 290.3	NEW ORLEANS TOWER 119.5 254.3	GND CON 121.9 273.525	CLNC DEL 120.925	CPDLC
-------------------------	---	---	---------------------------------	----------------------------	-------



ELEV 4 D TDZE 2

RLS Rwy 2
TDZ/CL Rwy 11
HIRL All Runways

3000	LETSE	tr 291°	RQR	VGSI and RNAV glidepath not coincident (VGSI Angle 3.00/TCH 68).
*LNAV only.	WIVUR 1.9 NM to RW29	BRRES 2000	HELMT 3000	
	*1.3 NM to RW29	2000	287°	GP 3.00° TCH 53
	1.3 NM 0.6 4.2 NM 5 NM			
CATEGORY	A	B	C	D
LPV DA**		202/24	200 (200-½)	
LNAV/VNAV DA		380/40	378 (400-¾)	
LNAV MDA	480/24	478 (500-½)	480/50	478 (500-1)
CIRCLING	520-1	516 (600-1)	580-1½ 576 (600-1½)	600-2 596 (600-2)