
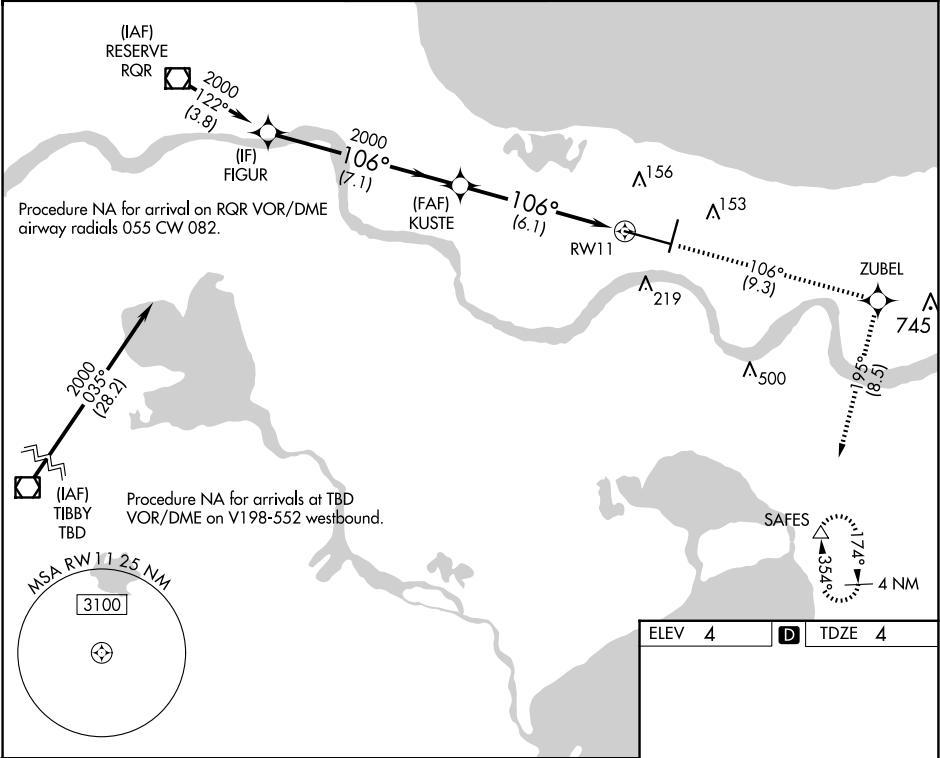


APP CRS	Rwy Ldg	9800
106°	TDZE	4
	Apt Elev	4

RNAV (RNP) Z RWY 11

LOUIS ARMSTRONG NEW ORLEANS INTL (MSY)

RNP AR APCH - GPS.			ALSF-2		MISSED APPROACH: Climb to 2000 on track 106° to ZUBEL and on track 195° to SAFES and hold.	
▼ For uncompensated Baro-VNAV systems, procedure NA below -1°C or above 54°C. For inop ALS, increase RNP 0.30 all Cats visibility to RVR 5500.						
D-ATIS 127.55	NEW ORLEANS APP CON WEST 125.5 350.35 EAST 133.15 290.3	NEW ORLEANS TOWER 119.5 254.3	GND CON 121.9 273.525	CLNC DEL 120.925	CPDLC	



VGSI and RNAV glidepath not coincident (VGSI Angle 2.80/TCH 73).		<div>2000</div> <div>↑</div>	<div>tr 106°</div>	<div>ZUBEL</div> <div>✧</div>	<div>tr 195°</div>	<div>SAFES</div> <div>△</div>
<div>FIGUR</div> <div>2000</div> <div>GP 3.00° TCH 55°</div> <div>106°</div> <div>2000</div> <div>7.1 NM</div> <div>B</div> <div>6.1 NM</div> <div>D</div> <div>RW11</div>		<div>106°</div> <div>A</div> <div>10104</div> <div>X 150</div> <div>H</div> <div>H</div> <div>2002</div> <div>A 190</div> <div>A4</div> <div>02</div> <div>29</div> <div>A5</div> <div>2</div> <div>TWR</div> <div>☆</div>				
CATEGORY	A	B	C	D		
RNP 0.30 DA	367/35 363 (400-5%)					
AUTHORIZATION REQUIRED						
RLS Rwy 2 TDZ/CL Rwy 11 HIRL All Runways						

SC-4, 07 AUG 2025 to 04 SEP 2025

SC-4, 07 AUG 2025 to 04 SEP 2025