

ILS or LOC RWY 29  
LOUIS ARMSTRONG NEW ORLEANS INTL (MSY)

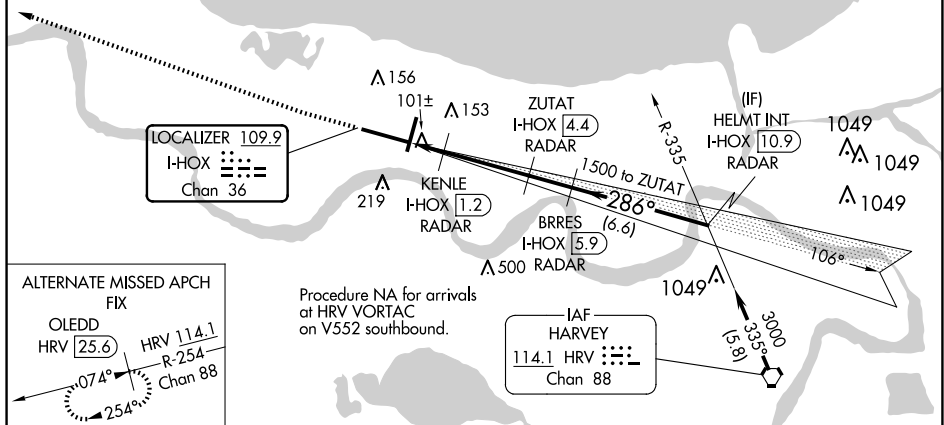
**MISSED APPROACH:** Climb to 600 then climbing right turn to 3000 direct RQR VOR/DME and hold.

MISSED APCH FIX

R-273 → 093° → [Box]

RESERVE  
RQR --- · ---  
110.8  
Chan 45

← 273° ←



ELEV 430 TDZ 2

RLLS Rwy 2  
TDZ/CL Rwy 11  
HIRL All Runways

FAF to MAP 4.5 NM

Knots	60	90	120	150	180
Min:Sec	4:30	3:00	2:15	1:48	1:30

Navigation Chart Details:

- Approach Path: 286°
- Distances: 1.4 NM, 3.1 NM, 1.6 NM, 5 NM
- Altitudes: 480, 1500, 2000
- Navigation Aids: I-HOX DME ANTENNA, I-HOX RADAR, ZUTAT I-HOX RADAR, BRRES I-HOX RADAR, HELMT INT I-HOX RADAR
- Minima Table:

CATEGORY	A	B	C	D
S-ILS 29**	202/24 200 (200-1/2)			
S-LOC 29	480/24	478 (500-1/2)	480/50	478 (500-1)
CIRCLING	520-1	516 (600-1)	580-1 1/2 576 (600-1 1/2)	600-2 596 (600-2)
KENNE FIX MINIMUMS				
S-LOC 29	360/24	358 (400-1/2)	360/30	358 (400-3/4)
CIRCLING	520-1	516 (600-1)	580-1 1/2 576 (600-1 1/2)	600-2 596 (600-2)