

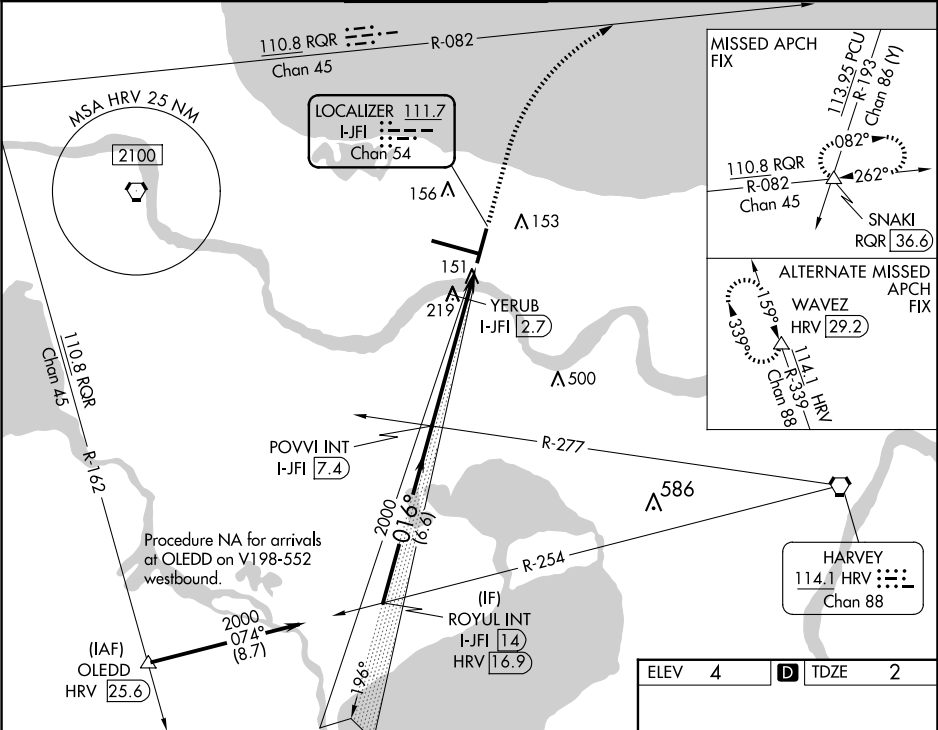
LOC/DME I-JFI	APP CRS	Rwy Ldg
111.7	016°	7002
Chan 54		TDZE 2
		Apt Elev 4

ILS or LOC RWY 2

LOUIS ARMSTRONG NEW ORLEANS INTL (MSY)

DME required for procedure entry.		MISSED APPROACH: Climb to 1500 then climbing right turn to 3000 on RQR VOR/DME R-082 to SNAKI INT/RQR 36.6 DME and hold.	
Autopilot coupled approach NA below 880. Rwy 2 helicopter visibility reduction below RVR 4000 NA.			

D-ATIS	NEW ORLEANS APP CON	NEW ORLEANS TOWER	GND CON	CLNC DEL	CPDLC
127.55	WEST 125.5 350.35 EAST 133.15 290.3	119.5 254.3	121.9 273.525	120.925	



VGS and ILS glidepath not coincident (VGS Angle 3.00/TCH 52).				
ROYUL INT I-JFI 14	POVVI INT I-JFI 7.4	1500	3000	SNAKI
2000	2000	480		
GS 3.00° TCH 56	6.6 NM	4.7 NM	1.4 NM	
CATEGORY	A	B	C	D
S-ILS 2	415/60	413 (500-1¼)		
S-LOC 2	480/55	478 (500-1)	480-1½	478 (500-1½)
CIRCLING	520-1	516 (600-1)	580-1½ 576 (600-1½)	580-2 576 (600-2)
YERUB FIX MINIMUMS				
S-LOC 2	420/55	418 (500-1)	420/60	418 (500-1¼)
CIRCLING	520-1	516 (600-1)	580-1½ 576 (600-1½)	580-2 576 (600-2)

