

SC-4, 07 AUG 2025 to 04 SEP 2025

NEW ORLEANS APP CON
125.5 350.35
MSY D-ATIS
127.55
NEW ATIS
124.9

ARRIVAL ROUTE DESCRIPTION

FIGHTING TIGER TRANSITION [LSU.AWDAD1]: From over LSU VORTAC on LSU R-135 to AWDAD INT.

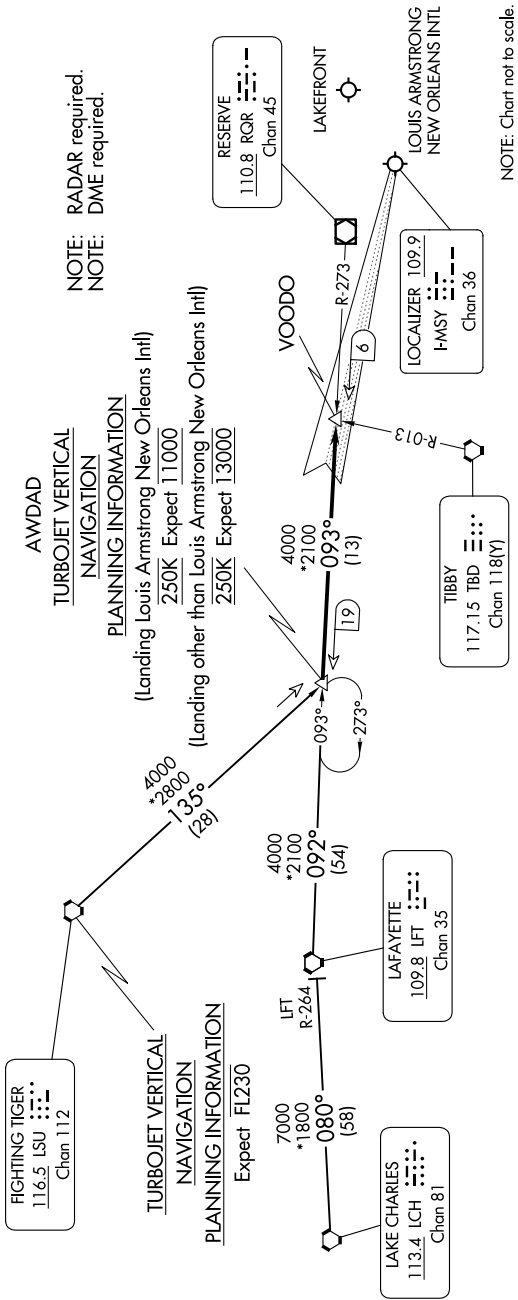
LAFAYETTE TRANSITION [LFT.AWDAD1]: From over LFT VOTRAC on LFT R-092 and RQR R-273 to AWDAD INT.

LAKE CHARLES TRANSITION [LCH.AWDAD1]: From over LCH VORTAC on LCH R-080 and LFT R-264 to LFT VORTAC then on LFT R-092 and RQR R-273 to AWDAD INT.

From over AWDAD INT on RQR VOR/DME R-273 to VOODO INT.

LANDING KMSY RWY 11: Intercept I-MSY localizer and expect clearance for ILS RWY 11 approach.

LANDING OTHER: Expect vectors to final approach course.



SC-4, 07 AUG 2025 to 04 SEP 2025