

APP CRS 317°	Rwy Idg TDZE Apt Elev	7200 589 589
------------------------	-----------------------------	---

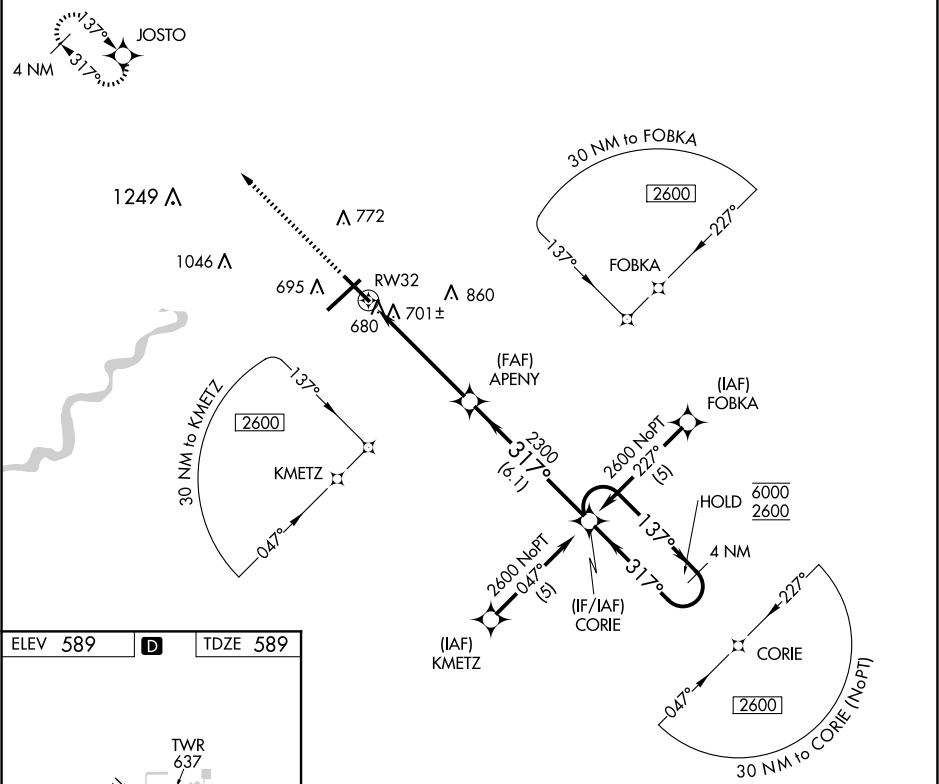
RNAV (GPS) RWY 32
TERRE HAUTE RGNL (HUF)

RNP APCH.

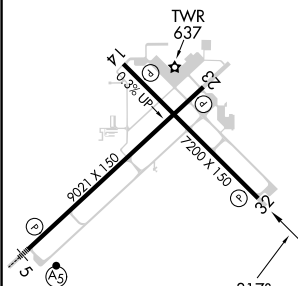
ASR **▲** VDP NA when using Paris altimeter setting. Rwy 32 helicopter visibility reduction below $\frac{3}{4}$ SM NA.
When local altimeter setting not received, use Paris altimeter setting and increase all MDAs 80 feet, LNAV Cat C/D visibility to $1\frac{3}{4}$ SM and Circling Cat C/D $\frac{1}{4}$ SM.

MISSED APPROACH:
Climb to 2600 direct
JOSTO and hold.

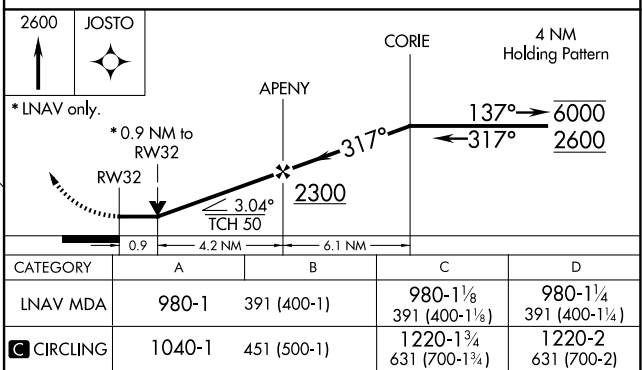
ATIS 127.5 269.375	HULMAN APP CON 125.45 339.8	HULMAN TOWER 134.725 322.475	GND CON 121.6 348.6
-----------------------	--------------------------------	---------------------------------	------------------------



ELEV 589	D	TDZE 589
----------	----------	----------



REIL Rwy 14, 23 and 32
HRL Rwy 5-23 and 14-32



TERRE HAUTE, INDIANA
Orig-E 25FEB21

39°27'N-87°18'W

TERRE HAUTE RGNL (HUF)
RNAV (GPS) RWY 32