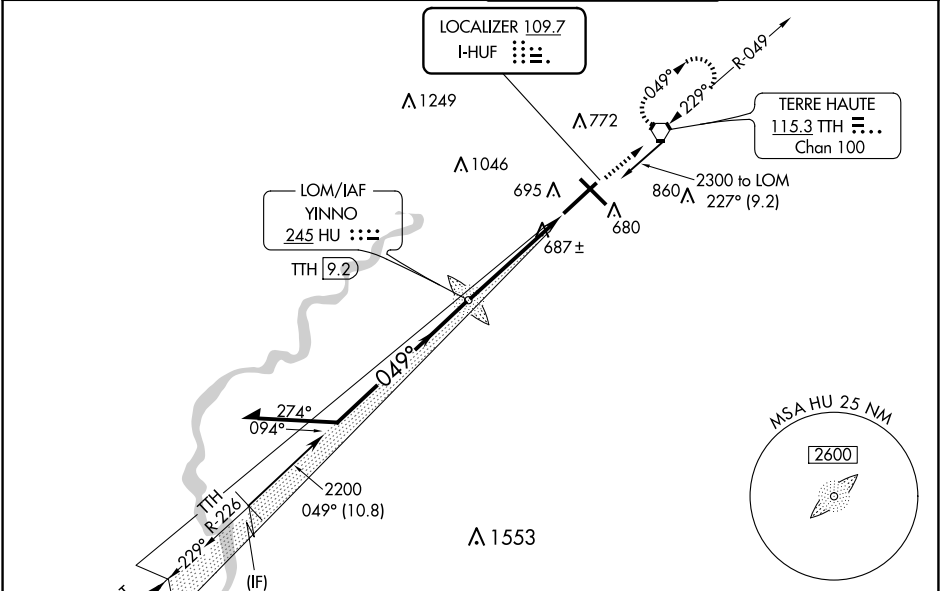


LOC I-HUF	APP CRS	Rwy Idg	9020
109.7	049°	TDZE	573
		Apt Elev	589

ILS or LOC RWY 5

TERRE HAUTE RGNL (HUF')

ADF or DME required.			
VDP NA when using Paris altimeter setting. When local altimeter setting not received, use Paris altimeter setting and increase all DA 61 feet and all MDA 80 feet, increase S-LOC 5 Cats C/D visibility to RVR 4500. For inop ALS, increase S-LOC 5 Cat C/D visibility to RVR 5500, when using Paris altimeter setting increase S-ILS 5 all Cats visibilities to RVR 4500 and S-LOC Rwy 5 all Cats visibility ½ SM. **RVR 1800 authorized with use of FD or AP or HUD to DA, NA when using Paris altimeter setting.	MALSR	MISSED APPROACH: Climb to 2300 direct TTH VORTAC and hold.	
ATIS	HULMAN APP CON	HULMAN TOWER	GND CON
127.5 269.375	125.45 339.8	134.725 322.475	121.6 348.6



2200 North  
046°  
(13:1)  
(IAF)  
WORKE  
BIB 35.2  
CSUCH  
TTH 20

Remain within 10 NM

YINNO LOM  
TTH 9.2

2300  
GS 3.00°  
TCH 40

2200

229°

049°

2125

\* TTH 5.5

\* LOC only.

2300 TTH

3.7 NM

1 NM

2300  
GS 3.00°  
TCH 40

2200

229°

049°

2125

\* TTH 5.5

\* LOC only.

2300 TTH

3.7 NM

1 NM

CATEGORY	A	B	C	D
S-ILS 5 **	773/24		200 (200-½)	
S-LOC 5	940/24	367 (400-½)	940/35	367 (400-¾)
CIRCLING	1040-1 451 (500-1)	1040-1 451 (500-1)	1220-1¾ 631 (700-1¾)	1220-2 631 (700-2)

ELEV 589 D TDZE 573

2300  
GS 3.00°  
TCH 40

2200

229°

049°

2125

\* TTH 5.5

\* LOC only.

2300 TTH

3.7 NM

1 NM

TWR 637

0.35 NM UP

9021 X 150

7200 X 130

REIL Rwys 14, 23 and 32  
HIRL Rwys 5-23 and 14-32  
FAF to MAP 4.7 NM

Knots	60	90	120	150	180
Min:Sec	4:42	3:08	2:21	1:53	1:34