

WAAS  
CH **82100**  
**W27A**

APP CRS  
**273°**

Rwy Idg  
TDZE **3**  
Apt Elev **3**

RNAV (GPS) RWY 27  
KEY WEST INTL (EYW)

RNP APCH - GPS.

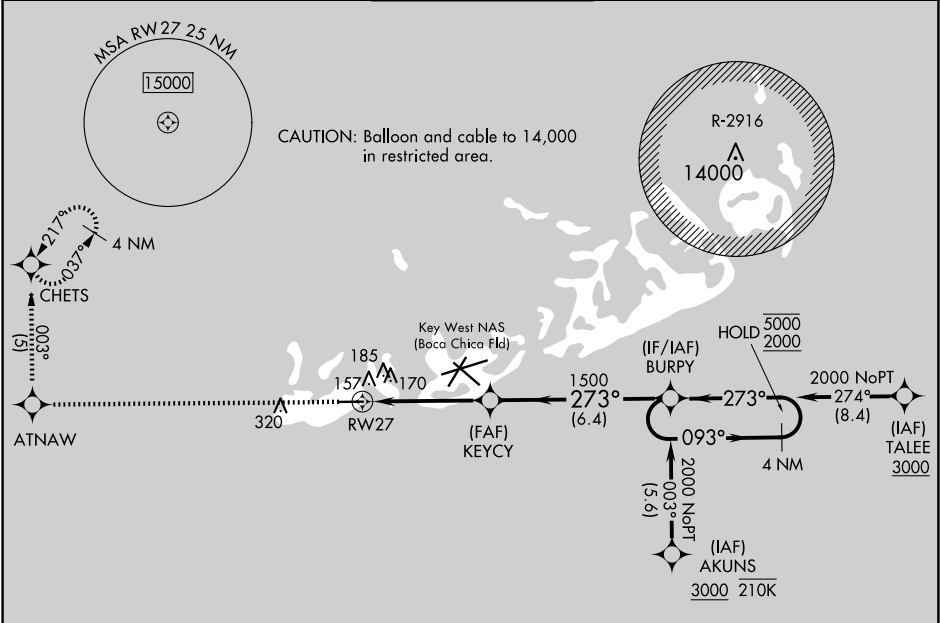
▼

⚠

Rwy 27 helicopter visibility reduction below ¾ SM NA.  
VDP NA when using NQX altimeter setting. When local altimeter setting not received, use NQX altimeter setting.

MISSED APPROACH: Climb to 3000 direct ATNAW and on track 003° to CHETS and hold, continue to climb in hold to 3000.

ATIS <b>119.675</b>	NAVY KEY WEST APP CON ★ <b>124.025 313.7</b>	KEY WEST TOWER ★ <b>118.2 (CTAF) 257.8</b>	GND CON <b>121.9</b>	CLNC DEL <b>121.9</b>	UNICOM <b>122.95</b>
------------------------	---	---	-------------------------	--------------------------	-------------------------



ELEV 3 D TDZE 3

MIRL Rwy 9-27  
REIL Rwy 9 and 27

3000 ATNAW CHETS  
003° tr

VGSI and RNAV glidepath not coincident (VGSI Angle 3.00/TCH 34).

BURPY

KEYCY

1.3 NM to RW27

1.3 NM 3.2 NM 6.4 NM

273° 093° 5000 2000

GP 3.00° TCH 45

CATEGORY	A	B	C	D
LPV DA	253-1 250 (300-1)			
LNAV MDA	460-1 457 (500-1)		460-1¾ 457 (500-1¾)	
CIRCLING	500-1 497 (500-1)		620-1¾ 617 (700-1¾) 620-2 617 (700-2)	