

SE-3, 07 AUG 2025 to 04 SEP 2025

NAVY KEY WEST APP CON★
124.025 313.7
EYW ATIS
119.675
KNQX ATIS ★
307.025

RESTRICTED AREA R-2916 - Caution cable
and unmarked balloon to 14000 MSL.



NOTE: Jet aircraft only.
NOTE: Do not file MOJIE Transition - to be
assigned ATC only.

KEY WEST NAS
(BOCA CHICA FLD)



TALEE
KEYW Ldg Rwy 27
3000



GUCEL
8000

6 NM



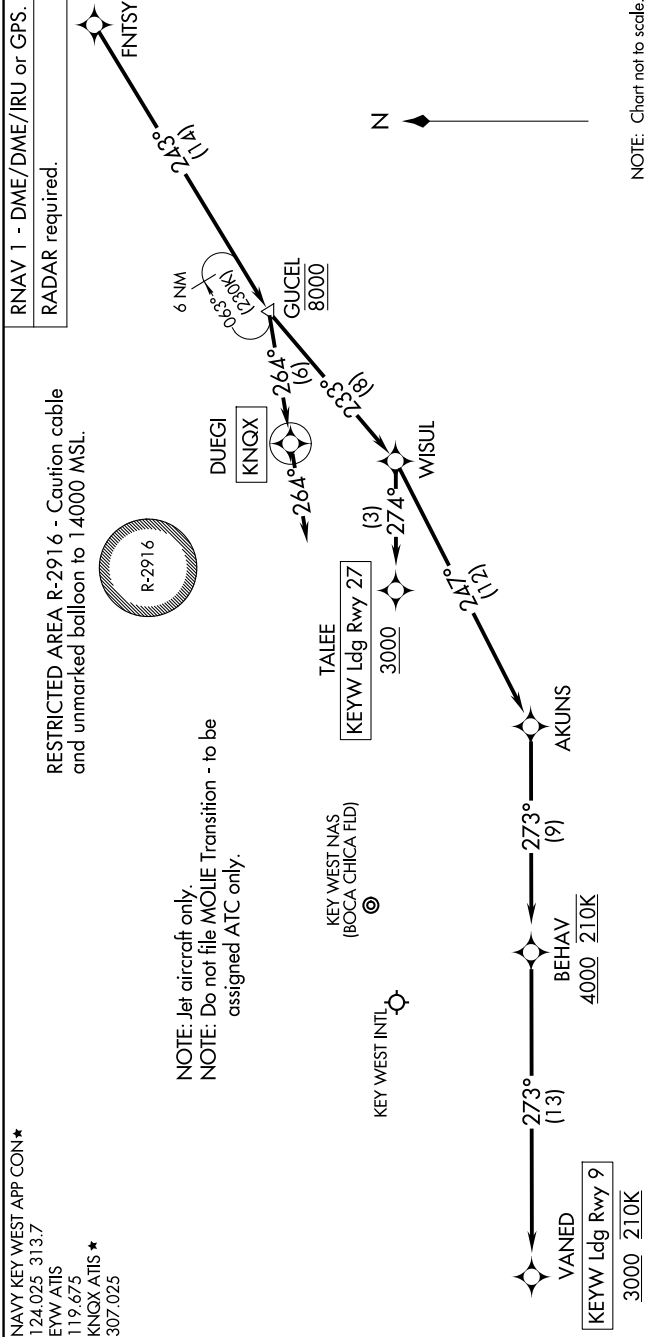
RNAV 1 - DME/DME/IRU or GPS.
RADAR required.

FNTSY ONE ARRIVAL(RNAV) Arrival Routes
(FNTSY.FNTSY1) 31OCT24

KEY WEST, FLORIDA

FNTSY ONE ARRIVAL(RNAV) Arrival Routes

KEY WEST, FLORIDA



NOTE: Chart not to scale.

ARRIVAL ROUTE DESCRIPTION

KEYW: From FNTSY on track 243° to cross GUCEL at 8000, then on track 233° to WISUL.
LANDING KEYW RUNWAY 9: From WISUL on track 247° to AKUNS, then on track 273° to cross BEHAV at or above 4000 and at 210K, then on track 273° to cross VANED at or above 3000 and at 210K. Expect RNAV (GPS) RWY 9 approach.
LANDING KEYW RUNWAY 27: From WISUL on track 274° to cross TALEE at or above 3000. Expect RNAV (GPS) RWY 27 approach.
LANDING KNQX: From FNTSY on track 243° to cross GUCEL at 8000, then on track 264° to DUEGI, then on track 264°. Expect RADAR vectors to final approach course.

SE-3, 07 AUG 2025 to 04 SEP 2025