

AL-606 (FAA)

## BUFTT ONE DEPARTURE (RNAV)

KEY WEST INTL (EYW)  
KEY WEST, FLORIDA

NAVY KEY WEST DEP CON ★

124.025 313.7

## ATIS

119.675

CLNC DEL

121.9

GND CON

121.9

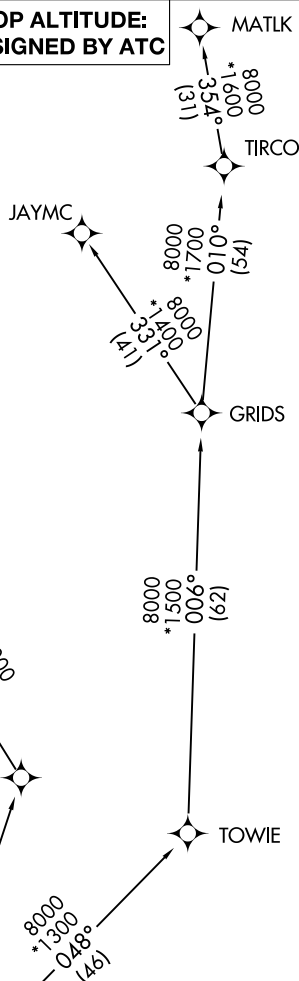
### KEY WEST TOWER ★

118.2 (CTAF) 257.8

RNAV 1-DME/DME/IRU or GPS.

RADAR required. RADAR required for non-GPS equipped aircraft.

**TOP ALTITUDE:  
ASSIGNED BY ATC**



## DEPARTURE ROUTE DESCRIPTION

**TAKEOFF RUNWAY 9:** Climb on heading 093° to 503, then left turn direct MOODI at or above 3000 at or below 250K, thence...

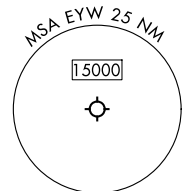
**TAKEOFF RUNWAY 27:** Climb on heading 273° to 503, then right turn direct SKARR, then on track 051° to cross MOODI at or above 3000 and at or below 250K, thence...

... on track 051° to BUFTT, then on assigned transition, maintain ATC assigned altitude, expect clearance to filed altitude within 10 minutes after departure.

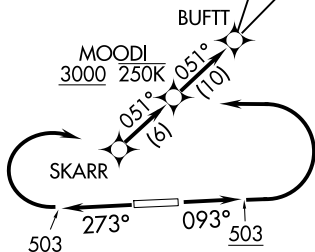
GUFFS TRANSITION (BUFTT1.GUFFS)

JAYMC TRANSITION (BUFTT1.JAYMC)

MATLK TRANSITION (BUFTT1.MATLK)



NOTE: Chart not to scale.



**CAUTION:** Unmarked tethered balloon to cable within R-2916 up to 14,000 MSL.

## BUFTT ONE DEPARTURE (RNAV)

(BUFTT1.BUFTT) 31OCT24

KEY WEST, FLORIDA  
KEY WEST INTL (EYW)

SE-3, 07 AUG 2025 to 04 SEP 2025