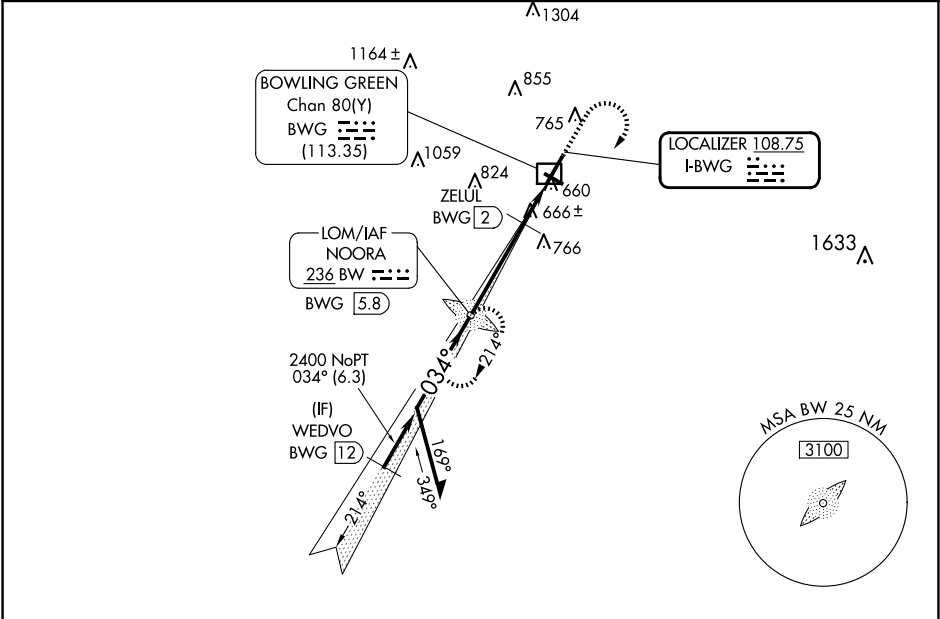


LOC I-BWG	APP CRS	Rwy Idg	6500
108.75	034°	TDZE	547
		Apt Elev	547

ILS Y or LOC Y RWY 3

BOWLING GREEN-WARREN COUNTY RGNL (BWG)

ADF required. RADAR required for procedure entry.		MISSED APPROACH: Climb to 2000 then climbing right turn to 2400 direct NOORA LOM and hold.
<div><div></div><div></div></div>	Circling Rwy 30 NA at night. † DME from BWG DME.	
ASOS 127.825	MEMPHIS CENTER 133.85 285.5	UNICOM 123.0 (CTAF) 0



ELEV 547		D	TDZE 547
*1200 when using GLW altimeter setting.		2000	2400
Remain within 10 NM			BW
2400 034°			
GS 3.00° TCH 44			
2400			
3.8 NM			
1.7 NM			
ZELUL BWG 2			
BW LOM BWG 5.8			
2326			
*1120			
BW DME ANTENNA			
ZELUL FIX MINIMUMS† (DME REQUIRED)			
S-LOC 3			
CIRCLING			
S-LOC 3			
CIRCLING			
Knots			
Min:Sec			