

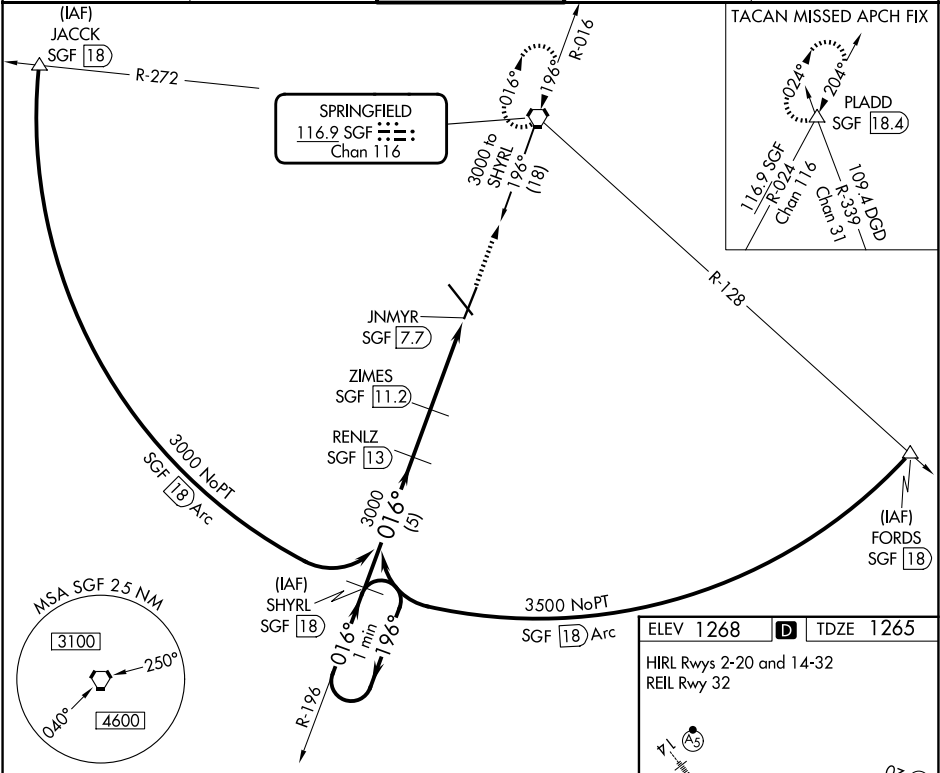
VORTAC SGF	APP CRS	Rwy Ldg	7003
116.9	016°	TDZE	1265
Chan 116		Apt Elev	1268

VOR/DME or TACAN RWY 2
SPRINGFIELD-BRANSON NTL (SGF')

For inoperative MALSR, increase S-2 Cat A and B visibility to RVR 5000 and Cat E to 1½. When local altimeter setting not received, use Monett altimeter setting and increase all MDA 100 feet, increase Circling Cat C to 1¾ mile. VDP NA when using Monett altimeter setting.

MALSR
MISSED APPROACH: Climb to 3000 direct SGF VORTAC and hold (TACAN Aircraft continue on SGF R-024 to PLADD INT/SGF 18.4 DME and hold, north, right turns, 204° inbound).

ATIS 135.125	SPRINGFIELD APP CON 124.95 290.5	SPRINGFIELD TOWER 119.9 257.8	GND CON 121.9 251.15	CLNC DEL 123.675
-----------------	-------------------------------------	----------------------------------	-------------------------	---------------------



One Minute Holding Pattern		SHYRL SGF 18	RENLZ SGF 13	ZIMES SGF 11.2	SGF 8.9	JNMYR SGF 7.7	3000 ↑	SGF ⬡
3000		196°		016°		3000	3000	
5 NM		1.8 NM		2.3 NM		1.2 NM	3.02° TCH 55	
CATEGORY	A	B	C	D	E			
S-2	1700/40 435 (500-¾)			1700/50 435 (500-1)				
CIRCLING	1760-1 492 (500-1)	1820-1 552 (600-1)	1820-1½ 552 (600-1½)	1920-2 652 (700-2)	2080-3 812 (900-3)			

