

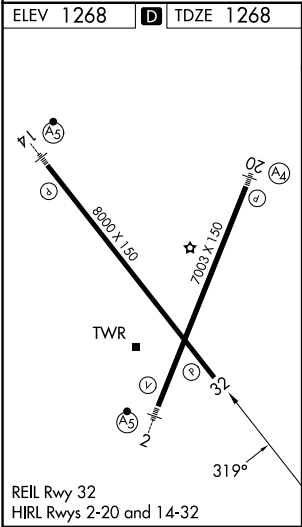
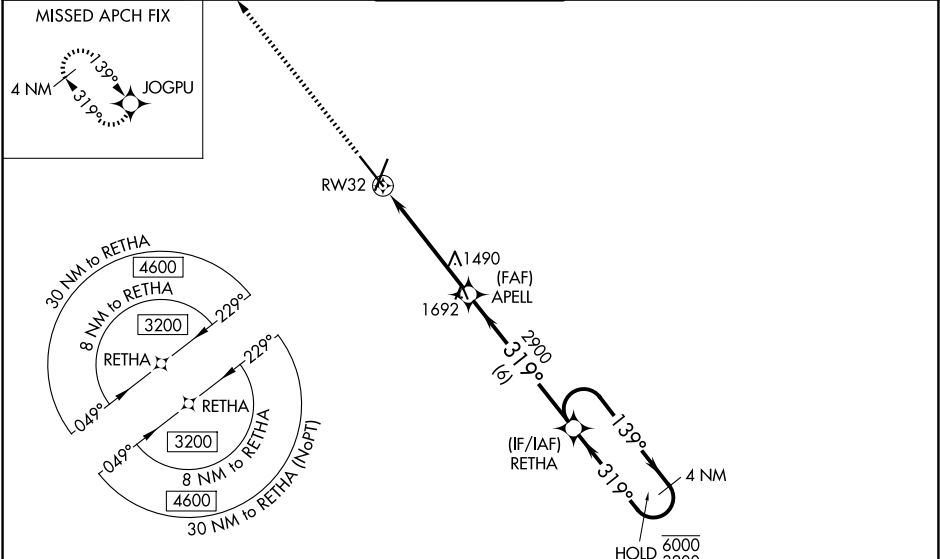
WAAS CH <b>72933</b> <b>W32A</b>	APP CRS <b>319°</b>	Rwy Ldg TDZE <b>1268</b> Apt Elev <b>1268</b>
--	------------------------	---

RNAV (GPS) RWY 32

SPRINGFIELD-BRANSON NTL (SGT')

RNP APCH - GPS.		MISSED APPROACH: Climb to 3000 direct JOGPU and hold.
<div><div><div>▼</div><div>▲</div></div></div>	<p>For uncompensated Baro-VNAV systems, LNAV/VNAV NA below -16°C or above 54°C. Baro-VNAV and VDP NA when using HFJ altimeter setting. When local altimeter setting not received, use HFJ altimeter setting and increase LPV DA to 1608 feet and all visibilities ¼ SM. Increase LNAV/VNAV DA to 1820 feet and all visibilities ¼ SM. Increase all MDAs 100 feet and LNAV visibility Cat C and D ¼ SM, and Circling visibility Cat C and D ½ SM.</p>	

ATIS <b>135.125</b>	SPRINGFIELD APP CON <b>124.95 290.5</b>	SPRINGFIELD TOWER <b>119.9 257.8</b>	GND CON <b>121.9 251.15</b>	CLNC DEL <b>123.675</b>
------------------------	--	---	--------------------------------	----------------------------



3000 ↑ JOGPU		VGSI and RNAV glidepath not coincident (VGSI Angle 3.00/TCH 35).		
		RETHA 4 NM Holding Pattern 139° → 6000 ← 319° 3200 GP 3.00° TCH 51		
CATEGORY	A	B	C	D
LPV DA	1518- <sup>3</sup> / <sub>4</sub> 250 (300- <sup>3</sup> / <sub>4</sub> )			
LNAV/ VNAV	DA 1730-1 <sup>3</sup> / <sub>8</sub> 462 (500-1 <sup>3</sup> / <sub>8</sub> )			
LNAV MDA	1740-1	472 (500-1)	1740-1 <sup>3</sup> / <sub>8</sub>	472 (500-1 <sup>3</sup> / <sub>8</sub> )
CIRCLING	1760-1 492 (500-1)	1820-1 552 (600-1)	1820-1 <sup>1</sup> / <sub>2</sub> 552 (600-1 <sup>1</sup> / <sub>2</sub> )	1920-2 652 (700-2)