


WAAS CH 65613 W20A	APP CRS 199°	Rwy Ldg 7003 TDZE 1262 Apt Elev 1268
--	------------------------	---

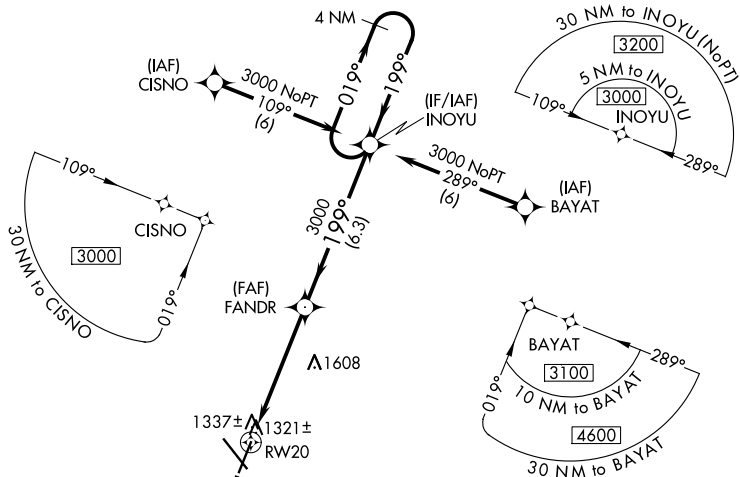
RNAV (GPS) RWY 20
SPRINGFIELD-BRANSON NTL (SGF)

	<p>DME/DME RNP: 0.3 NA. Visibility reduction by helicopters NA.</p> <p>For uncorrected Baro-VNAV systems, LNAV/VNAV NA below -17°C (2°F) or above 46°C (114°F).</p> <p>Baro-VNAV and VDP NA when using Monett altimeter setting.</p> <p>Inoperative table does not apply to LNAV/VNAV all Cats and LNAV Cat C.</p> <p>When local altimeter setting not received, use Monett altimeter setting and increase all DAs 90 feet and increase all MDAs 100 feet, increase LPV visibility all Cats ¼ mile, increase LNAV/VNAV all Cats ¼ mile, increase LNAV Cats C and D ½ mile, increase Circling Cat C ¼ mile.</p>
---	--

MALS

MISSED APPROACH: Climb to 3000 direct AWAQE and hold.

ATIS 135.125	SPRINGFIELD APP CON 124.95 290.5	SPRINGFIELD TOWER 119.9 257.8	GND CON 121.9 251.15	CLNC DEL 123.675
-----------------	-------------------------------------	----------------------------------	-------------------------	---------------------

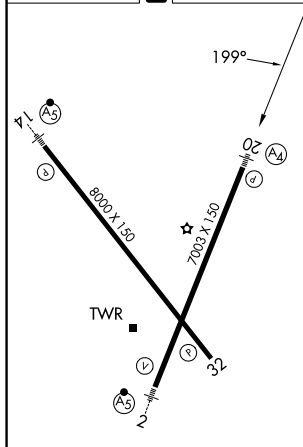


MISSED APCH FIX

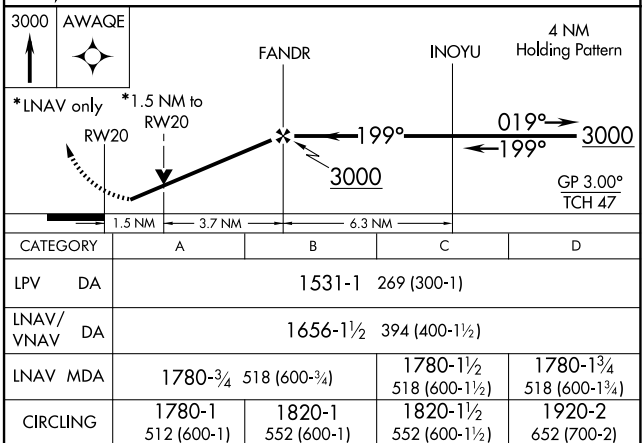
AWAQE



ELEV 1268	D	TDZE 1262
-----------	----------	-----------



REIL Rwy 32
HIRL Rwy 2-20 and 14-32



RNAV (GPS) RWY 20