

LOC/DME I-SGF	APP CRS	Rwy Ldg	7003
109.9	019°	TDZE	1265
Chan 36		Apt Elev	1268

ILS or LOC RWY 2

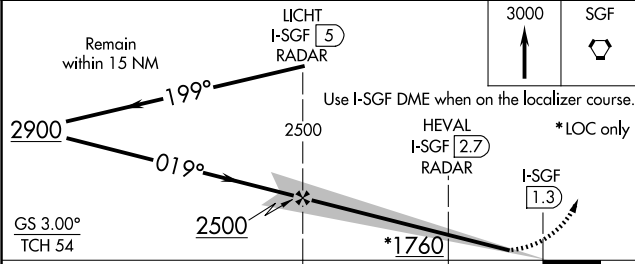
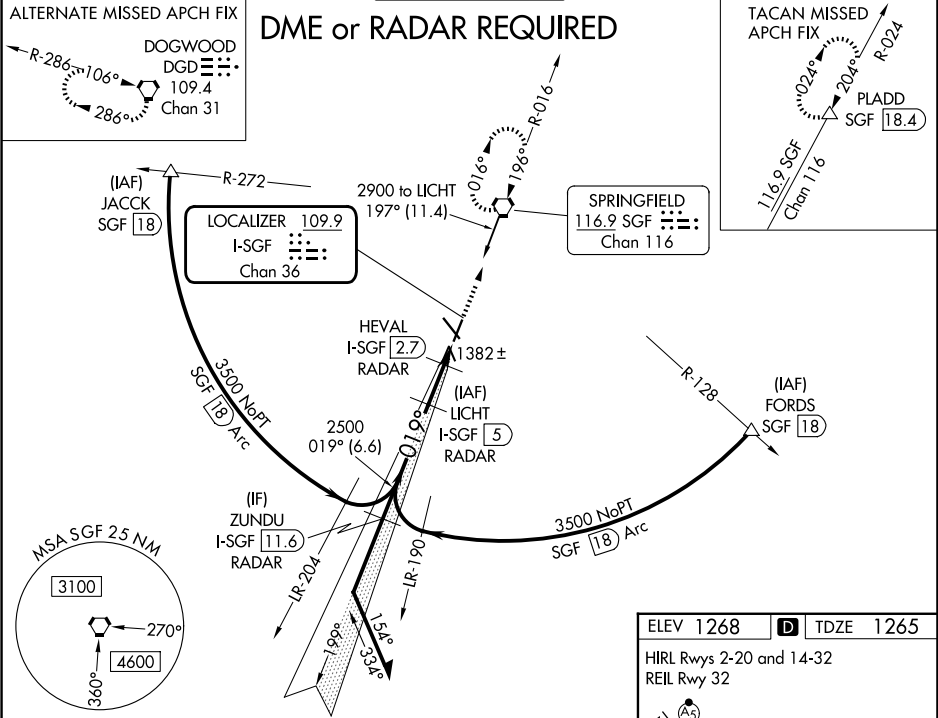
SPRINGFIELD-BRANSON NTL (SGF)

DME or RADAR required. For inop MALSR, increase S-ILS 2 Cat E visibility to RVR 4000, and S-LOC 2 Cat E visibility to 1¼ mile.  
#RVR 1800 authorized with use of FD or AP or HUD to DA.

MALSR

MISSED APPROACH: Climb to 3000 direct SGF VORTAC and hold (TACAN aircraft continue on SGF VORTAC R-024 to PLADD/SGF 18.4 DME and hold northeast, right turn, 204° inbound).

ATIS 135.125	SPRINGFIELD APP CON 124.95 290.5	SPRINGFIELD TOWER 119.9 257.8	GND CON 121.9 251.15	CLNC DEL 123.675
-----------------	-------------------------------------	----------------------------------	-------------------------	---------------------



CATEGORY	A	B	C	D	E
S-ILS 2#			1465/24	200 (200-½)	
S-LOC 2	1700/24	435 (500-½)	1700/40	435 (500-¾)	
CIRCLING	1760-1 492 (500-1)	1820-1 552 (600-1)	1820-1½ 552 (600-1½)	1920-2 652 (700-2)	2080-3 812 (900-3)

