

SPRINGFIELD, MISSOURI

HI-TACAN RWY 20

VORTAC SGF  
**116.9**  
Chan **116**

APCH CRS  
**196°**

Rwy Idg **7003**  
TDZE **1262**  
Arpt Elev **1268**

AL-604 [USAF]

SPRINGFIELD-BRANSON NATL (KSGF)

**T**

When local altimeter setting not received, use Monett altimeter setting.

MALS

MISSED APPROACH: Climb to 3000 then right turn via SGF VORTAC R-206 to BLUE INT/SGF 22 DME and hold.

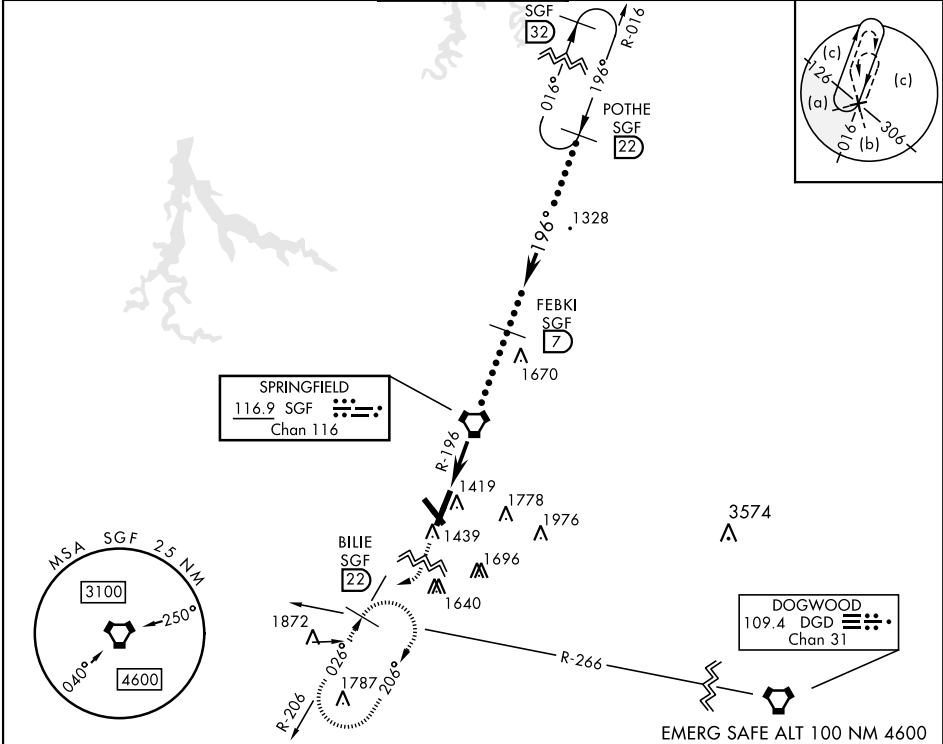
ATIS  
**135.125**

APP CON  
**121.1 290.5**

TOWER  
**119.9 257.8**

GND CON  
**121.9 251.15**

CLNC DEL  
**123.675**



3000

BLUE SGF 22

VDP NA when using Monett altimeter setting.

VORTAC

FEBKI 7

POTHE 22

15,000

196°

3400

3400

196°

3.02°

TCH 47

6.5 NM

CATEGORY	C	D	E
S-20	1760-1¼ 498 (500-1¼)	1760-1½ 498 (500-1½)	1760-1¾ 498 (500-1¾)
CIRCLING	1820-1½ 552 (600-1½)	1820-2 552 (600-2)	1920-2¼ 652 (700-2¼)

MONETT ALTIMETER SETTING MINIMUMS

S-20	1860-1½ 598 (600-1½)	1860-1¾ 598 (600-1¾)	1860-2 598 (600-2)
CIRCLING	1920-1¾ 652 (700-1¾)	1920-2¾ 652 (700-2¾)	2020-2¾ 752 (800-2¾)

ELEV 1268

TDZE 1262

196° 6.5 NM from VORTAC

1309

02

A4

8000 X 150

TWR 1361

2

A5

1301

REIL Rwy 32

HIRL Rwy 2-20 and 14-32

HI-TACAN RWY 20

NC-3, 07 AUG 2025 to 04 SEP 2025

NC-3, 07 AUG 2025 to 04 SEP 2025