

WAAS CH <b>93808</b> <b>W35A</b>	APP CRS <b>355°</b>	Rwy Idg TDZE Apt Elev	<b>7201</b> <b>1008</b> <b>1009</b>
--	------------------------	-----------------------------	---

RNAV (GPS) RWY 35  
PONCA CITY RGNL (PNC)

**⚠** For uncompensated Baro-VNAV systems, LNAV/VNAV NA below -17°C (2°F) or above 46°C (114°F). DME/DME RNP-0.3 NA. When local altimeter setting not received use Winfield-Arkansas City altimeter setting and increase LPV DA to 1377 feet, LNAV/VNAV DA to 1560 feet and all MDA 100 feet; increase LPV all Cats, LNAV/VNAV all Cats, LNAV Cats C and D and Circling Cats C and D visibility ¼ SM. Baro-VNAV NA when using Winfield-Arkansas City altimeter setting. Visibility reduction by helicopters NA.

**ODALS**

**MISSED APPROACH:**  
Climb to 2800 direct TOMHO and hold.

ASOS <b>134.075</b>	KANSAS CITY CENTER <b>127.8 319.1</b>	UNICOM <b>123.0 (CTAF) 0</b>
------------------------	--	---------------------------------

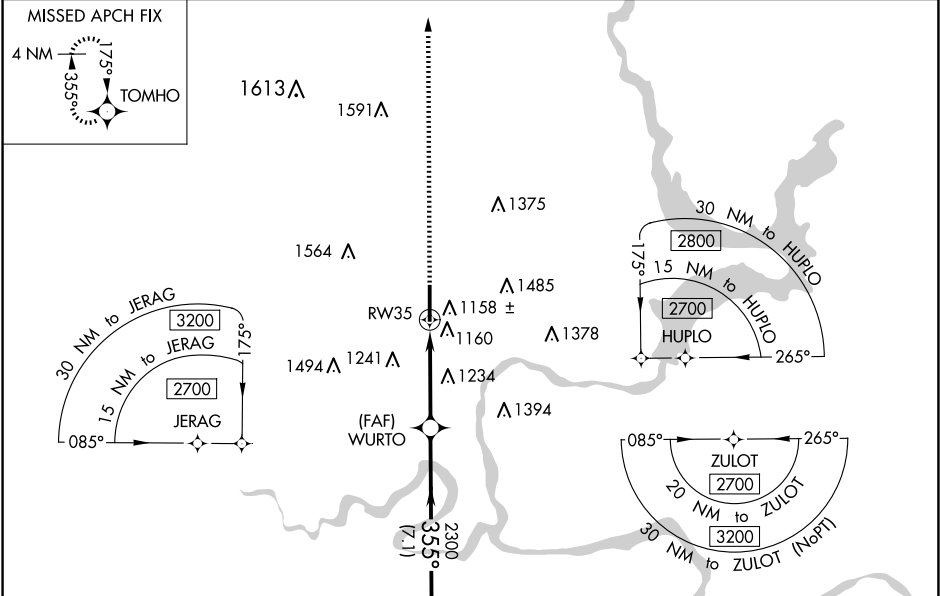


Diagram illustrating the 4 NM Holding Pattern for ZULOT. The pattern is a series of turns with 175° and 355° headings. The altitude is 2700 feet. The GP 3.00° TCH 45 is indicated. The diagram also shows the approach to ZULOT from the north, with a 4 NM distance and a 355° heading. The diagram includes the following information:

- 2700 NoPT (5) (IAF) JERAG
- 2700 NoPT (5) (IF/IAF) ZULOT
- 2700 NoPT (5) (IAF) HUPLO
- 4 NM
- 175°
- 355°
- GP 3.00° TCH 45

ELEV 1009 TDZE 1008

HIRL Rwy 17-35 0

Diagram illustrating the 4 NM Holding Pattern for ZULOT. The pattern is a series of turns with 175° and 355° headings. The altitude is 2700 feet. The GP 3.00° TCH 45 is indicated. The diagram also shows the approach to ZULOT from the north, with a 4 NM distance and a 355° heading. The diagram includes the following information:

- 4 NM Holding Pattern
- 2700
- 175°
- 355°
- GP 3.00° TCH 45
- ZULOT
- WURTO
- 2300
- 7.1 NM
- 3.9 NM
- 2800
- TOMHO
- RW35

CATEGORY	A	B	C	D
LPV DA	1295-1		287 (300-1)	
LNAV/VNAV DA	1478-1¾		470 (500-1¾)	
LNAV MDA	1540-1	532 (600-1)	1540-1½ 532 (600-1½)	1540-1¾ 532 (600-1¾)
CIRCLING	1540-1 531 (600-1)	1580-1 571 (600-1)	1800-2¼ 791 (800-2¼)	1880-2¾ 871 (900-2¾)

Diagram illustrating the 4 NM Holding Pattern for ZULOT. The pattern is a series of turns with 175° and 355° headings. The altitude is 2700 feet. The GP 3.00° TCH 45 is indicated. The diagram also shows the approach to ZULOT from the north, with a 4 NM distance and a 355° heading. The diagram includes the following information:

- 4 NM
- 175°
- 355°
- GP 3.00° TCH 45
- ZULOT
- WURTO
- 2300
- 7.1 NM
- 3.9 NM
- 2800
- TOMHO
- RW35
- 1050
- 7201 X 100
- 355° to RW35
- 35

SC-1, 07 AUG 2025 to 04 SEP 2025

SC-1, 07 AUG 2025 to 04 SEP 2025