

WAAS CH <b>50408</b> <b>W17A</b>	APP CRS <b>175°</b>	Rwy Idg <b>7201</b> TDZE <b>1004</b> Apt Elev <b>1009</b>
--	------------------------	---

RNAV (GPS) RWY 17

PONCA CITY RGNL (PNC)

RNP APCH - GPS.

▼

▲

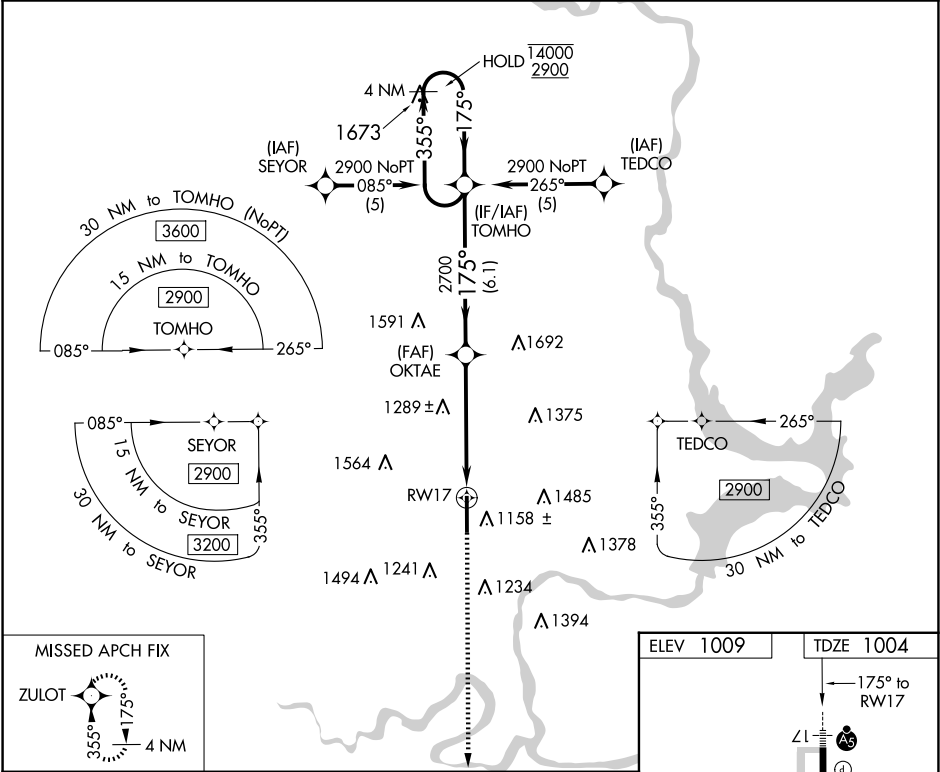
For uncompensated Baro-VNAV systems, LNAV/VNAV NA below -16°C or above 54°C. For inop ALS increase LPV visibility all Cats to ½ SM.

MALSR

AS

MISSED APPROACH: Climb to 2700 direct ZULOT and hold.

ASOS <b>134.075</b>	KANSAS CITY CENTER <b>127.8 319.1</b>	UNICOM <b>123.0 (CTAF) 0</b>
------------------------	--	---------------------------------



4 NM

Holding Pattern

TOMHO

OKTAE

2700

1.6 NM to RW17

RW17

2700

ZULOT

14000

2900

GP 3.00°

TCH 48

←355°

175°→

175°

2700

6.1 NM

3.6 NM

1.6 NM

CATEGORY	A	B	C	D
LPV DA	1279-½ 275 (300-½)			
LNAV/ VNAV DA	1330-½ 326 (400-½)			
LNAV MDA	1540-½ 536 (600-½)		1540-1 536 (600-1)	
CIRCLING	1540-1 531 (600-1)	1580-1 571 (600-1)	1800-2¼ 791 (800-2¼)	1880-2¾ 871 (900-2¾)

1050

7201 X 100

35

HIRL Rwy 17-35