
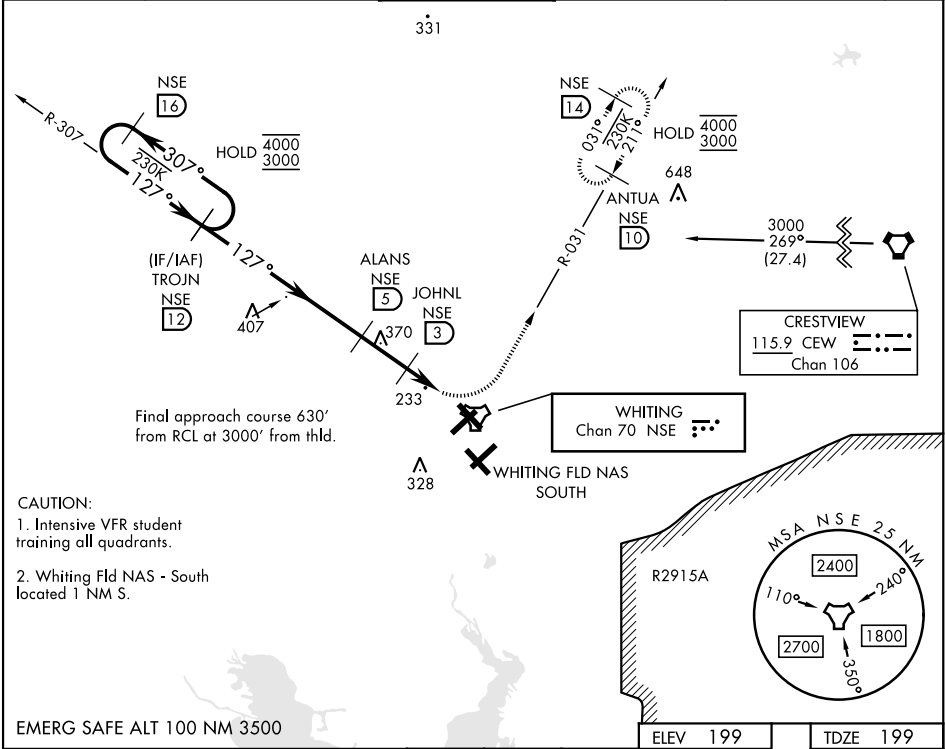


TACAN RWY 14

TACAN NSE Chan 70	APCH CRS 127°	Rwy Idg 6001 TDZE 199 Arpt Elev 199	[USN]	WHITING FLD NAS - NORTH (KNSE)		
* Circling not authorized S of Rwy 5 and 32.			MALSR 	MISSED APPROACH: Climb to 600, then climbing left turn to 3000, intercept NSE TACAN R-031 to ANTUA and hold. Continue climb in hold. Contact Pensacola APP CON.		
ATIS ★ 290.325	PENSACOLA APP CON 127.35 278.8		NORTH WHITING TOWER ★ 121.4 306.925	GND CON 251.15	CLNC DEL 257.775	ASR



TROJN R-307		ALANS	JOHNL	LUZZE	TACAN
16	12	5	3	1.2	
4000	307°	1700	1000		
3000	127°				
2 NM		1.8 NM			
CATEGORY	A	B	C	D	
S-14	500 - 1		301	(400 - 1)	
CIRCLING*	560-1 361 (400-1)	660-1 461 (500-1)	660-1½ 461 (500-1½)	760-2 561 (600-2)	

HIRL all rwys