

RNAV (GPS) RWY 23

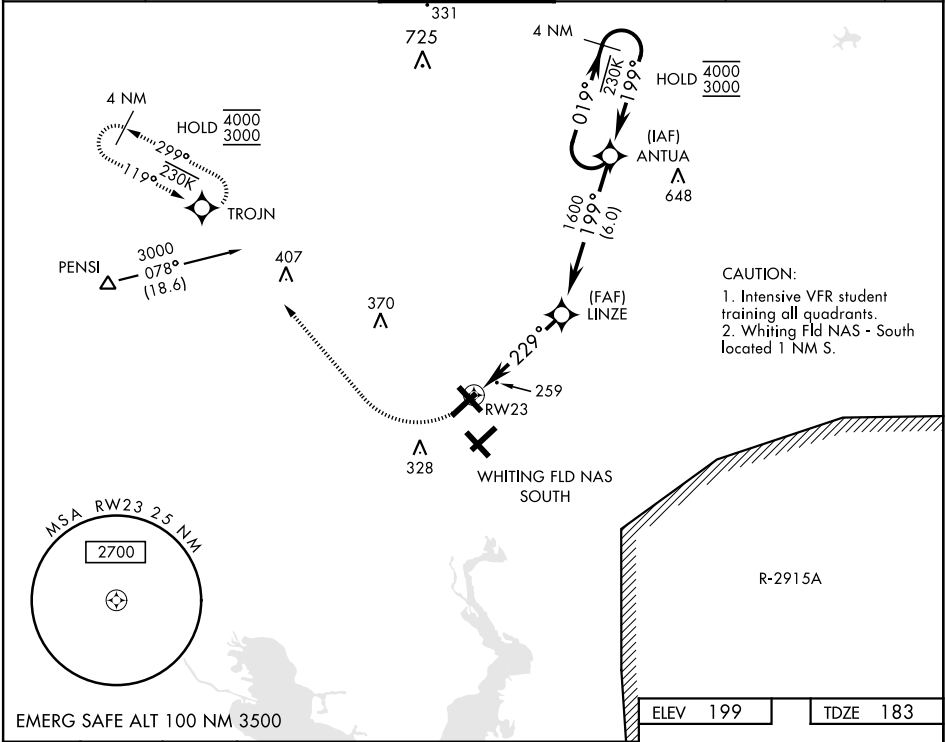
APCH CRS	Rwy Idg
229°	6003
TDZE	183
Arpt Elev	199


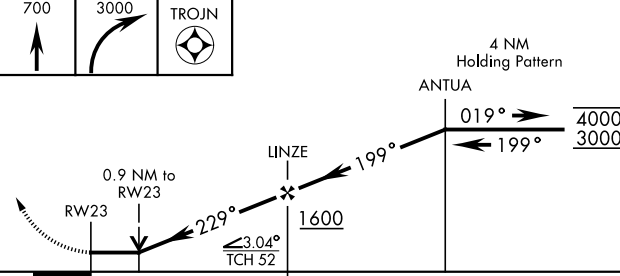

[USN]

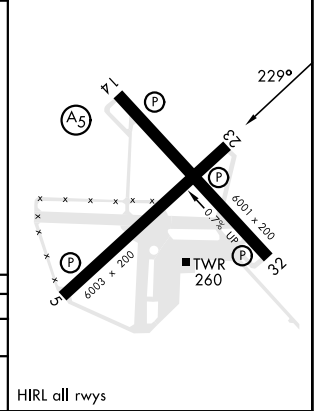
WHITING FLD NAS - NORTH (KNSE)

RNP APCH	MISSED APPROACH: Climb to 700, then climbing right turn to 3000 direct TROJN and hold. Continue climb in hold. Contact Pensacola APP CON.
* Circling not authorized S of Rwy 5 and 32.	

ATIS ★ 290.325	PENSACOLA APP CON 127.35 278.8	NORTH WHITING TOWER ★ 121.4 306.925	GND CON 251.15	CLNC DEL 257.775	ASR
-------------------	-----------------------------------	--	-------------------	---------------------	-----



700 ↑	3000 ↗	TROJN 				
CATEGORY	A	B	C	D		
LNAV MDA	520-1		337	(400-1)		
 CIRCLING*	560-1 361 (400-1)	660-1 461 (500-1)	660-1½ 461 (500-1½)	760-2 561 (600-2)		



RNAV (GPS) RWY 23

SE-3, 07 AUG 2025 to 04 SEP 2025

SE-3, 07 AUG 2025 to 04 SEP 2025