

NDB GTP <b><u>245</u></b>	APP CRS <b>225°</b>	Rwy Ldg TDZE Apt Elev	<b>5504</b> <b>242</b> <b>264</b>
------------------------------	------------------------	-----------------------------	---

NDB RWY 22  
THOMASVILLE RGNL (TVI)

**T** When local altimeter setting not received, use Valdosta altimeter setting and increase all MDA 100 feet, increase S-22 Cats C/D visibility  $\frac{3}{4}$  SM and Circling Cats C/D visibility  $\frac{1}{4}$  SM. For inop ALS, increase S-22 Cats C/D visibility to 1 3/8 SM. For inop ALS when using the Valdosta altimeter setting, increase S-22 Cat D visibility to 1 3/8 SM. Circling Rwy 4, 14, 32 NA at night.

MALSF

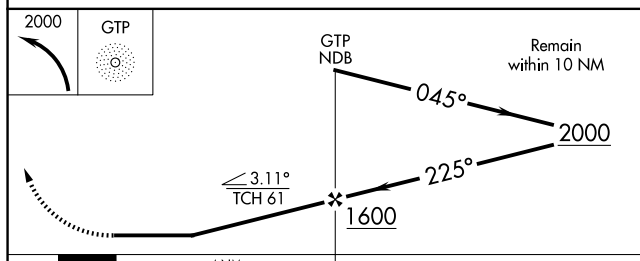
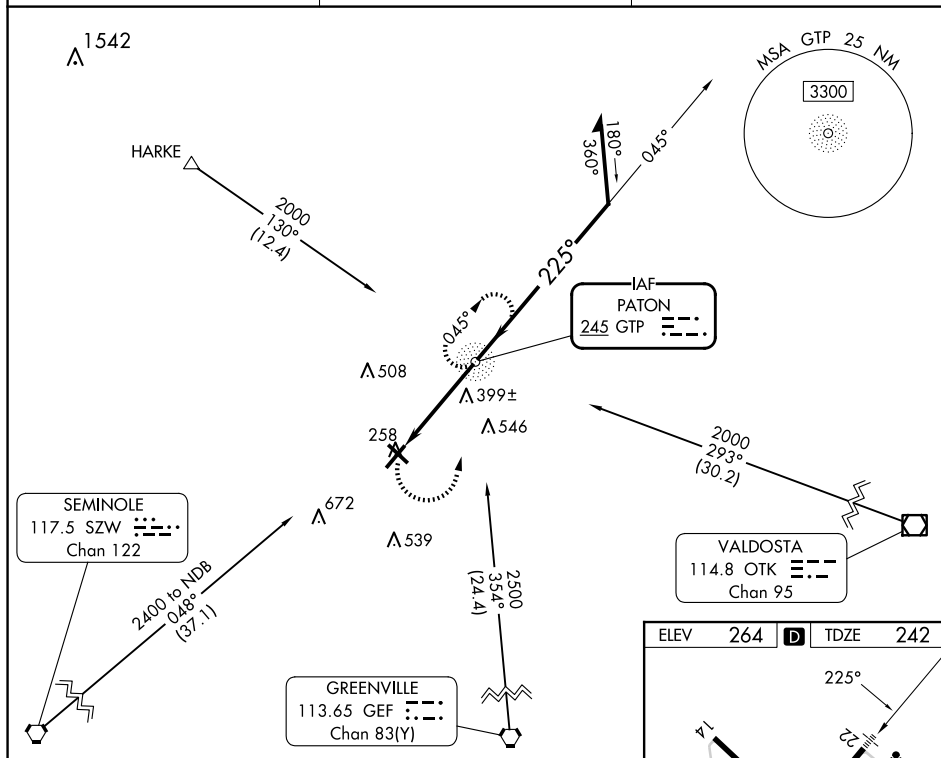



**MISSED APPROACH:**  
Climbing left turn to 2000  
direct GTP NDB and hold,  
continue climb-in-hold to 2000.

AWOS-3PT  
119.175

VALDOSTA APP CON ★  
126.6 285.6

UNICOM  
123.075 (CTAF) **L**



		4 NM			
CATEGORY	A	B	C	D	
S-22	700- $\frac{3}{4}$	458 (500- $\frac{3}{4}$ )	700-1	458 (500-1)	
 CIRCLING	700-1 436 (500-1)	800-1 536 (600-1)	900-1 $\frac{3}{4}$ 636 (700-1 $\frac{3}{4}$ )	1040-2 $\frac{1}{2}$ 776 (800-2 $\frac{1}{2}$ )	

FAF to MAP 4 NM					
Knots	60	90	120	150	180
Min:Sec	4:00	2:40	2:00	1:36	1:20