

WAAS  
CH **77509**  
**W31A**

APP CRS  
**309°**

Rwy Ldg **10104**  
TDZE **650**  
Apt Elev **661**

**RNAV (GPS) RWY 31**

GENERAL DOWNING - PEORIA INTL (PIA)

**RNP APCH - GPS.**

▼ For uncompensated Baro-VNAV systems, LNAV/VNAV NA below -20°C or above 54°C.

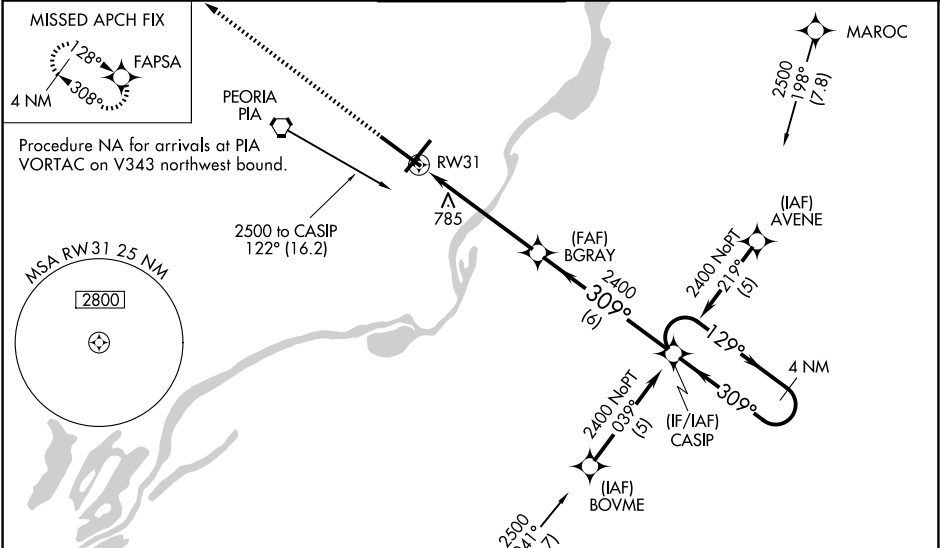
▲ When local altimeter setting not received, use Lincoln altimeter setting and increase LPV DA to 1028 feet and all visibilities to RVR 3500; increase LNAV/VNAV DA to 1211 feet and all visibilities to 1 ¼ SM; increase all MDAs 100 feet and LNAV visibility Cat C/D to 1 ¼ SM, and Circling visibility Cat C/D ½ SM. Baro-VNAV and VDP NA when using Lincoln altimeter setting. For inop ALS, increase LPV all Cats visibility to RVR 4500, LNAV/VNAV all Cats visibility to 1 ¾ SM, and LNAV visibility Cat C/D to 1 ¾ SM. For inop ALS when using Lincoln altimeter setting, increase LPV all Cats visibility to RVR 5500, LNAV/VNAV all Cats visibility to 1 ¾ SM, and LNAV visibility Cat C/D to 1 ¾ SM.

MALSR

MISSED APPROACH:

Climb to 2500 direct FAPSA and hold.

ATIS	SAINT LOUIS APP CON	PEORIA TOWER	GND CON	CLNC DEL
<b>126.1 282.2</b>	<b>125.8 269.2</b>	<b>124.0 353.85</b>	<b>121.85 348.6</b>	<b>124.675 317.55</b>



ELEV 661	<b>D</b>	TDZE 650
----------	----------	----------

2500

FAPSA

BGRAY

2400

CASIP

4 NM Holding Pattern

1.3 NM to RW31

1.3

4 NM

6 NM

GP 3.00°

TCH 55

CATEGORY	A	B	C	D
LPV DA	939/24 289 (300-½)			
LNAV/VNAV DA	1122/60 472 (500-1¼)			
LNAV MDA	1120/24	470 (500-½)	1120/50	470 (500-1)
CIRCLING	1160-1	499 (500-1)	1180-1½ 519 (600-1½)	1400-2¼ 739 (800-2¼)