


LOM PI	APP CRS	Rwy Ldg
356	309°	10104
		TDZE
		650
		Apt Elev
		661

NDB RWY 31

GENERAL DOWNING - PEORIA INTL (PIA)

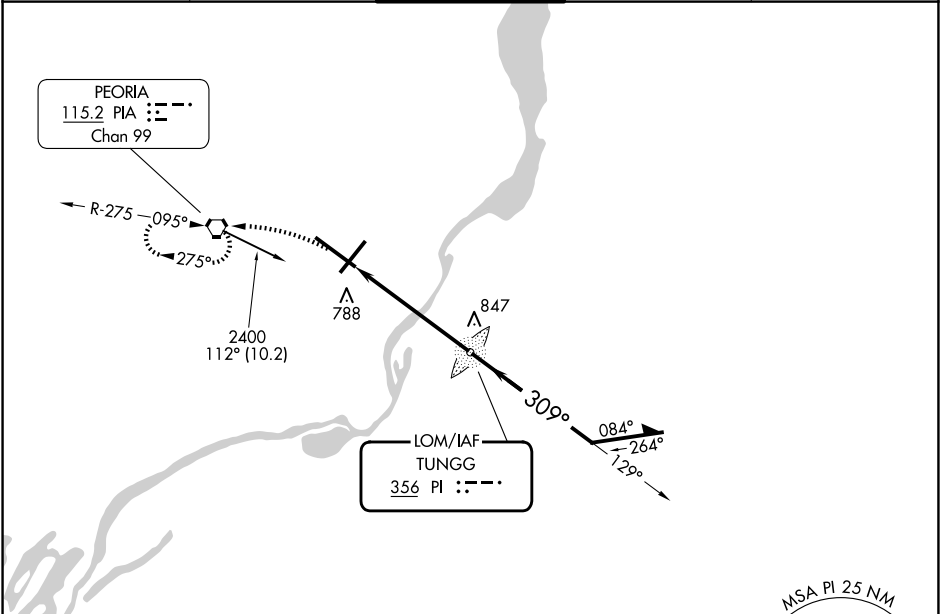
⚠ For inop ALS, increase S-31 Cat A/B visibility to RVR 5500, and Cat C/D to 1 3⁄8 SM. When local altimeter setting not received, use Logan County altimeter setting and increase all MDA 100 feet, increase S-31 Cat C and D visibility 1⁄4 mile, and Circling Cat C 1⁄4 mile and Cat D 1⁄2 mile. Circling Rwy 13, 31 NA at night.

MALSR



MISSED APPROACH: Climbing left turn 2400 direct PIA VORTAC and hold.

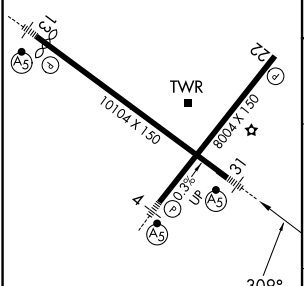
ATIS	SAINT LOUIS APP CON	PEORIA TOWER	GND CON	CLNC DEL
126.1 282.2	125.8 269.2	124.0 353.85	121.85 348.6	124.675 317.55



ELEV 661

D

TDZE 650




HIRL Rws 4-22 and 13-31

FAF to MAP 5.2 NM

Knots	60	90	120	150	180
Min:Sec	5:12	3:28	2:36	2:05	1:44

2400

PIA



PI LOM

Remain within 10 NM

129°

2400

309°

2400

≤ 3.09°

TCH 50

5.2 NM

CATEGORY	A	B	C	D
S-31	1140/40	490 (500-3⁄4)	1140/50	490 (500-1)
CIRCLING	1160-1	499 (500-1)	1180-1 1⁄2 519 (600-1 1⁄2)	1400-2 1⁄4 739 (800-2 1⁄4)

NDB RWY 31