

VORTAC PIA 115.2 Chan 99	APCH CRS 281°	Rwy Idg 10,104 TDZE 650 Arpt Elev 661
--------------------------------	------------------	---

[USAF]

GENERAL DOWNING - PEORIA INTL (KPJA)

DME required. RADAR required for procedure entry.

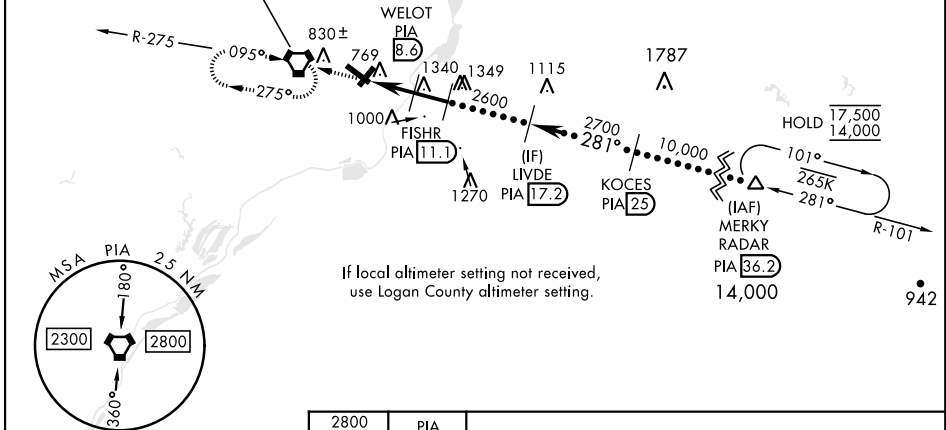
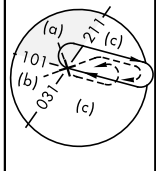
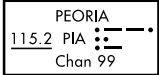
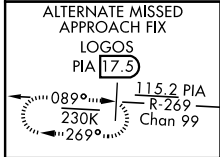
*Straight-in Rwy 31, Circling Rwy 13-31 not authorized at night.

MALSR



MISSED APPROACH: Climb to 2800, direct PIA VORTAC and hold. Continue climb-in-hold to 2800. (TACAN aircraft: continue on PIA R-269 to LOGOS/PIA 17.5 DME and hold west, right turn 089° inbound).

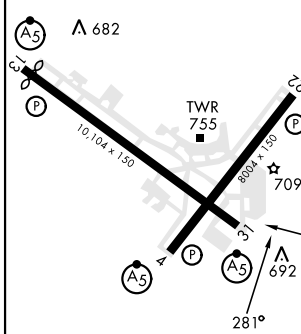
ATIS 126.1 282.2	SAINT LOUIS APP CON 125.8 269.2	PEORIA TOWER 124.0 353.85	GND CON 121.85 348.6
---------------------	------------------------------------	------------------------------	-------------------------





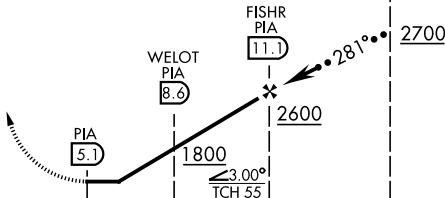


EMERG SAFE ALT 100 NM 3300

ELEV 661	D	TDZE 650
----------	---	----------

Rwy 4 Idg 7826'
Rwy 13 Idg 9604'



HIRL all rwys

2800	PIA			
				
				
CATEGORY	C	D	E	
S-31*	1040/60		390	(400-1½)
 CIRCLING*	1180-1½ 519 (600-1½)	1400-2¼ 739 (800-2¼)	1680-3 1019 (1100-3)	
LOGAN COUNTY ALTIMETER MINIMA				
S-31*	1140-1¾		490	(500-1¾)
 CIRCLING*	1280-1¾ 619 (700-1¾)	1500-2¾ 839 (900-2¾)	1780-3 1119 (1200-3)	