

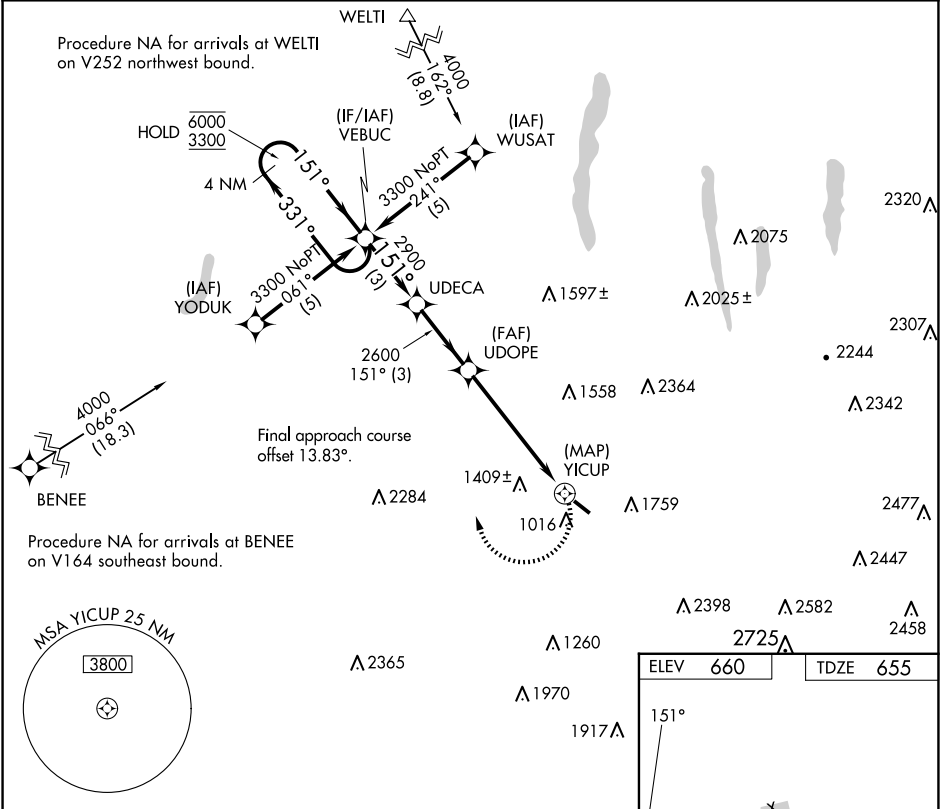
APP CRS	Rwy Idg	3500
151°	TDZE	655
	Apt Elev	660

RNAV (GPS) RWY 14

DANSVILLE MUNI (DSV)

RNP APCH.	MISSED APPROACH: Climbing right turn to 3500 direct VEBUC and hold.
<div><div>▼</div><div>▲</div></div> Procedure NA at night. Rwy 14 helicopter visibility reduction below 1 SM NA.	

ASOS 118.325	ROCHESTER APP CON 123.7 322.3	UNICOM 123.0 (CTAF) 0
-----------------	----------------------------------	--------------------------



4 NM Holding Pattern VEBUC		VGSI and descent angles not coincident (VGSI Angle 3.00/TCH 35).		3500	VEBUC
<div><div>6000</div><div>3300</div></div> <div><div>←331°</div><div>→151°</div></div>		<div><div>UDECA</div><div>UDOPE</div></div> <div><div>2900</div><div>2600</div></div> <div><div>151°</div><div>2.98°</div></div> <div><div>TCH 40</div></div>		<div><div>YICUP</div></div> <div><div>0.5</div></div>	
3 NM		3 NM		5.6 NM	
CATEGORY	A	B	C	D	
LNVA MDA	1840-1¼ 1185 (1200-1¼)	1840-1½ 1185 (1200-1½)	1840-3 1185 (1200-3)	NA	
CIRCLING	1940-1¼ 1280 (1300-1¼)	2120-1½ 1460 (1500-1½)	2220-3 1560 (1600-3)	NA	

MIRL Rwy 14-32 0