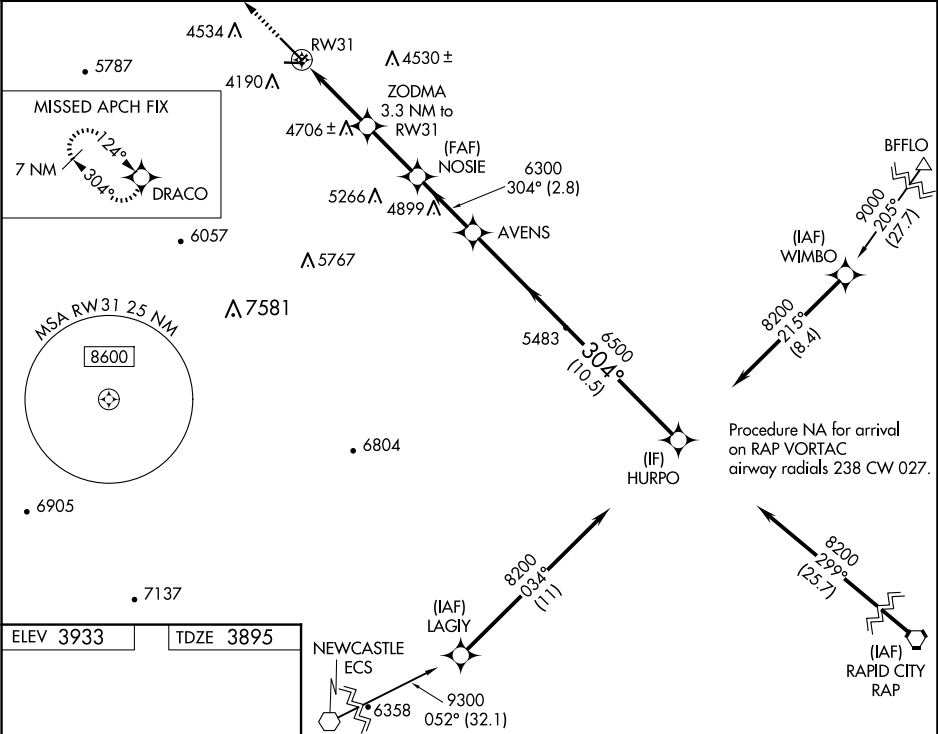


WAAS CH 77821 W31A	APP CRS 304°	Rwy Ldg TDZE Apt Elev	6401 3895 3933
--	------------------------	-----------------------------	---

RNAV (GPS) RWY 31

BLACK HILLS-CLYDE ICE FLD (SPF')

RNP APCH.		MISSED APPROACH: Climb to 7000 direct DRACO and hold.	
Circling NA to Rwy 4, 8, 22 and 26.			
-30°C			
AWOS-3 118.325	ELLSWORTH APP CON 119.5 259.1	GCO 121.725	UNICOM 122.7 (CTAF) 0



ELEV 3933	TDZE 3895	NEWCASTLE ECS 6358 9300 052° (32.1)			
7000 DRACO		VGSI and RNAV glidepath not coincident (VGSI Angle 3.00/TCH 50).			
*LNAV only		NOSIE 6300 AVENS 6500 HURPO 8200 GP 3.77° TCH 50			
RW31 3.3 NM		ZODMA 3.3 NM to RW31			
5260*		6300 2.8 NM			
3.3 NM		10.5 NM			
CATEGORY	A	B	C	D	
LPV DA	4281-1½ 386 (400-1½)			NA	
LNAV MDA	4860-1¼ 965 (1000-1¼)	4860-1½ 965 (1000-1½)	4860-3 965 (1000-3)	NA	
CIRCLING	4860-1¼ 927 (1000-1¼)	4860-1½ 927 (1000-1½)	5540-3 1607 (1700-3)	NA	