

WAAS CH <b>70621</b> <b>W13A</b>	APP CRS <b>124°</b>	Rwy Ldg TDZE <b>3884</b> Apt Elev <b>3933</b>
--	------------------------	---

RNAV (GPS) RWY 13

BLACK HILLS-CLYDE ICE FLD (SPF)

RNP APCH.

▼

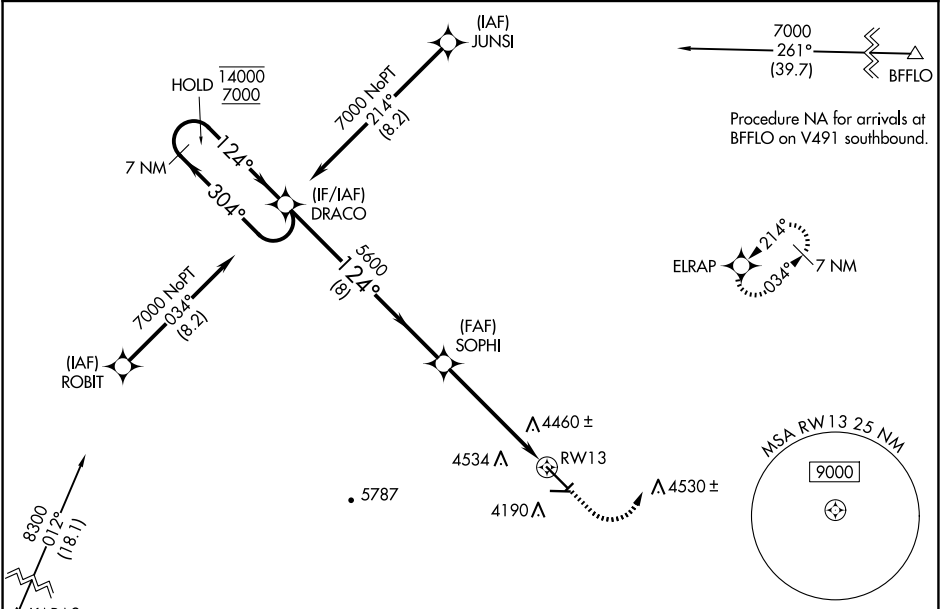
⚠

❄

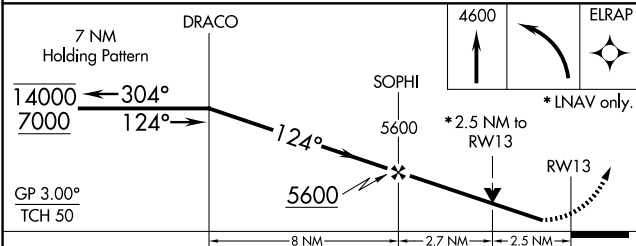
Circling NA to Rwy 4, 8, 22 and 26. Rwy 13 helicopter visibility reduction below ¾ SM NA. For uncompensated Baro-VNAV systems, LNAV/VNAV NA below -22°C or above 54°C.

MISSED APPROACH: Climb to 4600 then climbing left turn to ELRAP and hold, continue climb-in-hold to 7000.

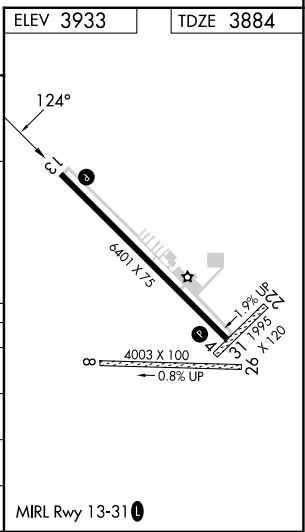
AWOS-3 <b>118.325</b>	ELLSWORTH APP CON★ <b>119.5 259.1</b>	GCO <b>121.725</b>	UNICOM <b>122.7 (CTAF) 0</b>
--------------------------	--	-----------------------	---------------------------------



Procedure NA for arrivals at KARAS on V86 northwest bound.



CATEGORY	A	B	C	D
LPV DA	4219-1½	335 (300-1½)		NA
LNAV/VNAV DA	4852-4	968 (1000-4)		NA
LNAV MDA	4720-1 836 (800-1)	4720-1¼ 836 (800-1¼)	4720-2½ 836 (800-2½)	NA
CIRCLING	4760-1¼ 827 (900-1¼)	4920-1½ 987 (1000-1½)	5540-3 1607 (1700-3)	NA



NC-1, 07 AUG 2025 to 04 SEP 2025

NC-1, 07 AUG 2025 to 04 SEP 2025