

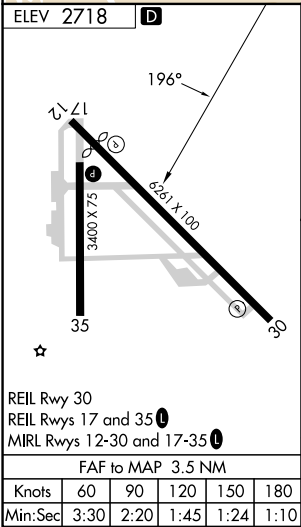
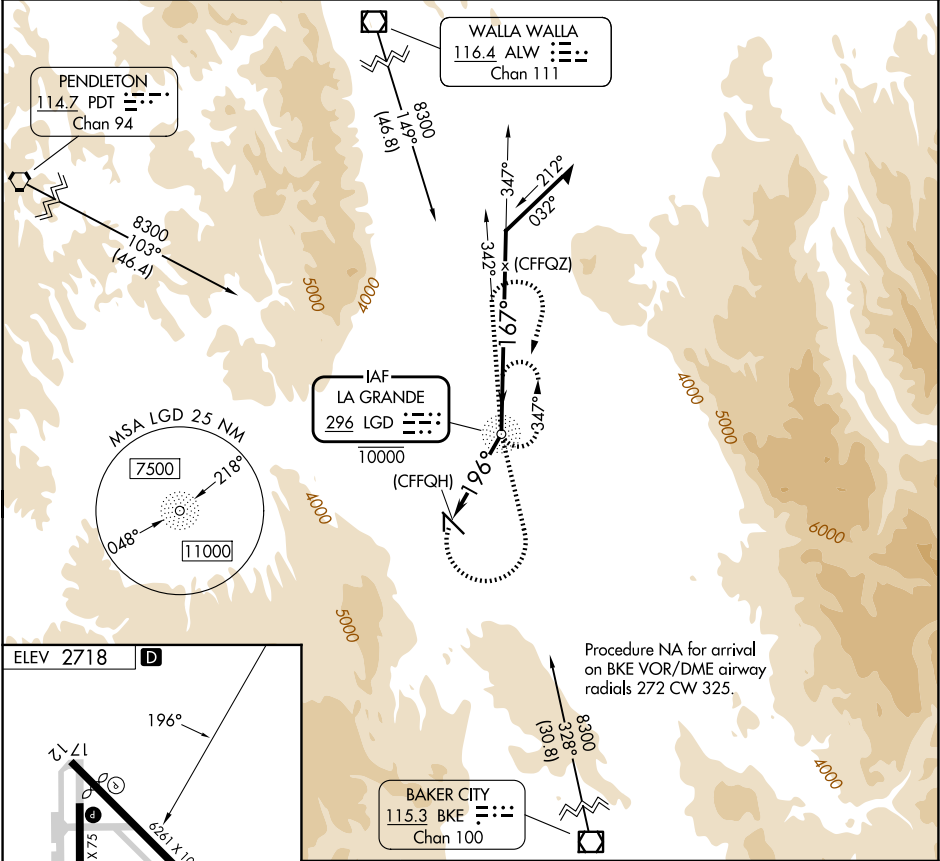
NDB LGD <b>296</b>	APP CRS <b>196°</b>	Rwy Ldg TDZE Apt Elev <b>N/A</b> <b>N/A</b> <b>2718</b>
-----------------------	------------------------	--

NDB-B

LA GRANDE/UNION COUNTY (LGD)

<b>NA</b> Circling NA for Cat C southwest of Rwy 12-30. -16°C	MISSED APPROACH: Climbing left turn to 6500 direct LGD NDB and on bearing 342° from LGD NDB, then climbing right turn to 7700 direct LGD NDB and hold.
---	--

AWOS-3PT <b>135.075</b>	SEATTLE CENTER <b>132.6 269.35</b>	UNICOM <b>122.8 (CTAF)</b>
----------------------------	---------------------------------------	-------------------------------



6500 LGD	7700 LGD	10000 LGD NDB	Remain within 10 NM
<b>LA GRANDE/UNION COUNTY (LGD)</b>			
CATEGORY			
A			
B			
C			
D			
CIRCLING			
4600-1 1/4			
1882 (1900-1 1/4)			
4600-1 1/2			
1882 (1900-1 1/2)			
4600-3			
1882 (1900-3)			
NA			

NDB-B

NW-1, 07 AUG 2025 to 04 SEP 2025

NW-1, 07 AUG 2025 to 04 SEP 2025