

VOR/DME IDA <b>113.85</b> Chan <b>85</b> (Y)	APP CRS <b>192°</b>	Rwy Ldg TDZE <b>4735</b> Apt Elev <b>4744</b>
--	------------------------	---

VOR RWY 21

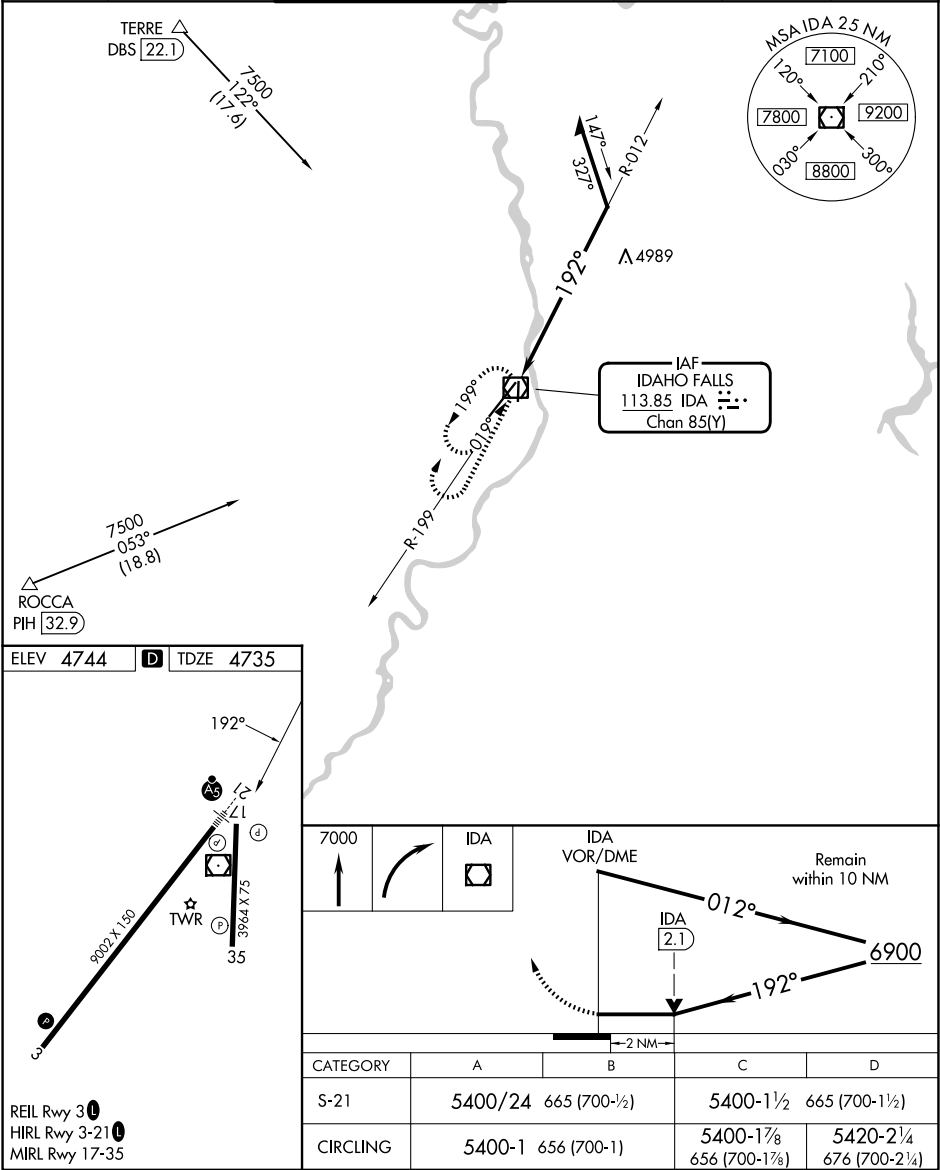
IDAHO FALLS RGNL (IDA)

For inop ALS increase S-21 Cats C/D visibility to 1½ SM.

MALSRL

MISSED APPROACH: Climb to 7000 then right turn direct IDA VOR/DME and hold.

ATIS <b>135.325</b>	SALT LAKE CENTER <b>128.35 239.25</b>	IDAHO FALLS TOWER ★ <b>118.5</b> (CTAF) <b>0 257.8</b>	GND CON <b>121.7</b>	CLNC DEL <b>121.7</b>	GCO <b>121.725</b>	UNICOM <b>122.95</b>
------------------------	--	---	-------------------------	--------------------------	-----------------------	-------------------------



NW-1, 07 AUG 2025 to 04 SEP 2025

NW-1, 07 AUG 2025 to 04 SEP 2025