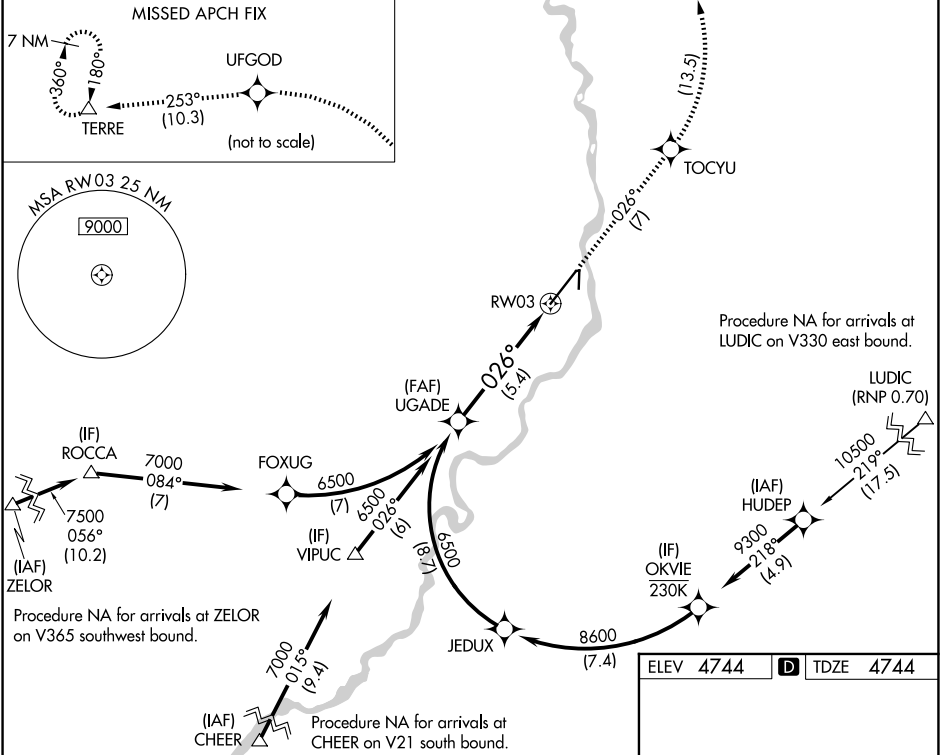


APP CRS	Rwy Ldg	9002
026°	TDZE	4744
	Apt Elev	4744

RNAV (RNP) Z RWY 3

IDAHO FALLS RGNL (IDA)

RNP AR APCH-GPS.			MISSED APPROACH: Climb to 7500 on track 026° to TOCYU, left turn to UFGOD, and on track 253° to TERRE and hold.			
For uncompensated Baro-VNAV systems, procedure NA below -27°C or above 54°C.						
ATIS	SALT LAKE CENTER	IDAHO FALLS TOWER*	GND CON	CLNC DEL	GCO	UNICOM
135.325	128.35 239.25	118.5 (CTAF) 0 257.8	121.7	121.7	121.725	122.95



UGADE		7500 ↑ tr 026°	TOCYU ✦	UFGOD ✦	tr 253° △	TERRE
6500		See planview for multiple IF locations.				
6500		026°				
GP 3.00° TCH 50		RW03				
		5.4 NM				
CATEGORY	A	B	C	D		
RNP 0.11 DA	5050-7 $\frac{1}{8}$		306 (400-7 $\frac{1}{8}$ )			
RNP 0.30 DA	5146-1 $\frac{1}{8}$		402 (500-1 $\frac{1}{8}$ )			
AUTHORIZATION REQUIRED						

