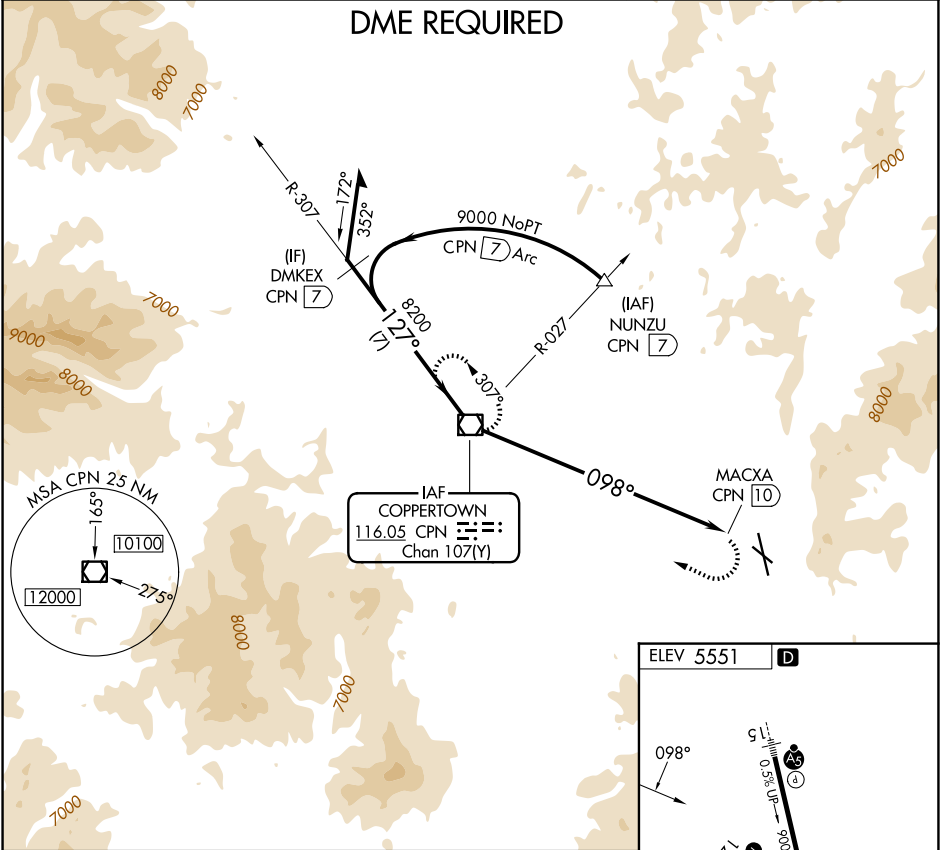


VOR/DME CPN <b>116.05</b> Chan <b>107(Y)</b>	APP CRS <b>098°</b>	Rwy Ldg TDZE Apt Elev <b>N/A</b> <b>N/A</b> <b>5551</b>
--	------------------------	--

**VOR-A**  
BERT MOONEY (BTM)

 -24°C	DME required. Circling NA northeast of Rwy 15-33.	MISSED APPROACH: Climbing right turn to 9300 direct CPN VOR/DME and hold.
-----------	--	--

ASOS <b>135.175</b>	SALT LAKE CENTER <b>132.4 338.3</b>	UNICOM <b>123.0(CTAF) 0</b>
------------------------	--	--------------------------------



Remain within 10 NM		CPN VOR/DME		9300	CPN	
10200		307°				
127°		8200				
098°		MACXA CPN 10				
10 NM						
CATEGORY	A	B	C	D	REIL Rwys 12 and 30 ① MIRL Rwys 12-30 and 15-33 ①	
CIRCLING	7120-1¼ 1569 (1600-1¼)	7120-1½ 1569 (1600-1½)	7120-3 1569 (1600-3)	7140-3 1589 (1600-3)		

NW-1, 07 AUG 2025 to 04 SEP 2025

NW-1, 07 AUG 2025 to 04 SEP 2025