

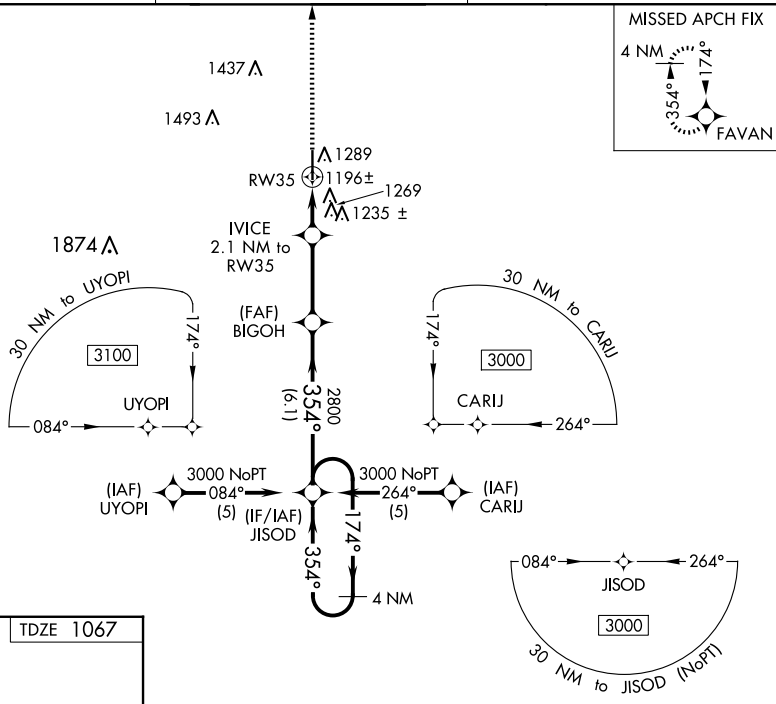
WAAS CH 72818 W35A	APP CRS 354°	Rwy Ldg 5593 TDZE 1067 Apt Elev 1073
--	------------------------	---

RNAV (GPS) RWY 35
SHAWNEE RGNL (SNL)

▼ Baro-VNAV NA when using Seminole altimeter setting. For uncompensated Baro-VNAV systems, LNAV/VNAV NA below -17°C (2°F) or above 54°C (130°F). DME/DME RNP-0.3 NA. When local altimeter setting not received, use Seminole altimeter setting: increase LPV DA to 1357 feet; increase LNAV/VNAV DA to 1605 feet and visibility ¼ SM; increase all MDAs 40 feet and visibility Cat C ¼ SM.

MISSED APPROACH:
Climb to 3000 direct
FAVAN and hold.

AWOS-3PT 118.275	OKE CITY APP CON 120.45 288.325	UNICOM 122.7 (CTAF) 0
----------------------------	---	---------------------------------



ELEV 1073

MIRL Rwy 17-35

REIL Rwys 17 and 35

41

5997 X 100

35

354°

TDZE 1067

3000 FAVAN VGS1 and RNAV glidepath not coincident (VGS1 Angle 3.00/TCH 42).

*LNAV only.

4 NM Holding Pattern

JISOD

174° → 3000

← 354°

GP 3.00° TCH 47

2800

354°

2800

1780*

2.1 NM to RW35

3.1 NM

6.1 NM

CATEGORY	A	B	C	D
LPV DA	1317-1	250 (300-1)		NA
LNAV/VNAV DA	1565-1 ³ / ₄	498 (500-1 ³ / ₄)		NA
LNAV MDA	1520-1	453 (500-1)	1520-1 ¹ / ₄ 453 (500-1 ¹ / ₄)	NA
C CIRCLING	1600-1	527 (600-1)	1640-1 ¹ / ₂ 567 (600-1 ¹ / ₂)	NA